

## Product datasheet for **SM1080PS**

### CD11a (ITGAL) Mouse Monoclonal Antibody [Clone ID: 38]

#### Product data:

Product Type:	Primary Antibodies
Clone Name:	38
Applications:	FC, IHC, IP
Recommended Dilution:	<b>Flow cytometry:</b> Use 5 µl of 1/50-1/100 diluted antibody to label 10e6 cells in 100 µl. <b>Immunoprecipitation.</b> <b>Immunohistochemistry on Frozen Sections.</b> <i>Recommended Positive Control:</i> Human Tonsil.
Reactivity:	Human
Host:	Mouse
Isotype:	IgG2a
Clonality:	Monoclonal
Specificity:	This antibody recognises the integrin alpha-L subunit, a 180kD glycoprotein expressed by all human leucocytes. The molecule is involved in cell-cell adhesion processes and binds to ICAM-1, 2 and 3.
Formulation:	State: Purified State: Liquid purified IgG fraction containing 0.09% Sodium Azide as preservative
Concentration:	lot specific
Purification:	Affinity Chromatography on Protein G.
Conjugation:	Unconjugated
Storage:	Store the antibody undiluted at 2-8°C for one month or (in aliquots) at -20°C for longer. Avoid repeated freezing and thawing.
Stability:	Shelf life: one year from despatch.
Gene Name:	integrin subunit alpha L
Database Link:	<a href="#">Entrez Gene 3683 Human P20701</a>



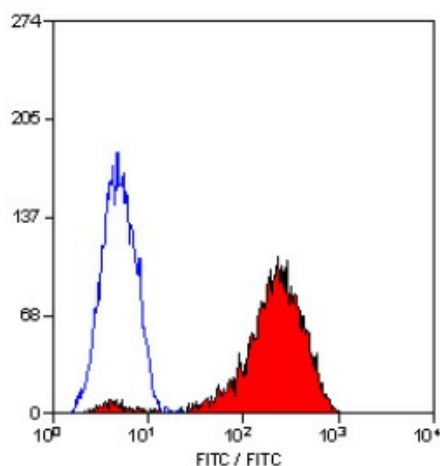
[View online »](#)

**Background:**

CD11a is a member of the integrin family of cell adhesion molecules. It is a glycoprotein expressed in combination with the CD18 beta chain. The complex is a member of the beta 2 integrin family. These molecules function in cell adhesion and specifically bind to CD54, ICAM2, ICAM3. CD11a is expressed on thymocytes, T and B lymphocytes, granulocytes, monocytes, and macrophages.

**Synonyms:**

Integrin alpha-L, LFA1, LFA-1

**Product images:**

Staining of human peripheral blood lymphocytes with MOUSE ANTI HUMAN CD11