

Product datasheet for **SM1080P**

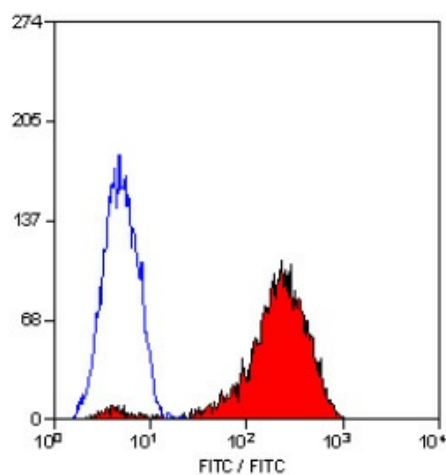
CD11a (ITGAL) Mouse Monoclonal Antibody [Clone ID: 38]

Product data:

Product Type:	Primary Antibodies
Clone Name:	38
Applications:	FC, IHC, IP
Recommended Dilution:	<u>Flow cytometry</u> : 1/50 - 1/100; use 5 µl of the suggested working dilution to label 10e6 cells in 100µl. <u>Immunoprecipitation</u> . <u>Immunohistochemistry on frozen sections</u> . Recommended positive control: Human Tonsil.
Reactivity:	Human
Host:	Mouse
Isotype:	IgG2a
Clonality:	Monoclonal
Specificity:	This antibody recognises the integrin alphaL subunit.
Formulation:	State: Purified State: Liquid purified IgG containing 0.09% Sodium Azide
Concentration:	lot specific
Purification:	Affinity chromatography on Protein G
Conjugation:	Unconjugated
Storage:	Store the antibody undiluted at 2-8°C for one month or (in aliquots) at -20°C for longer. Avoid repeated freezing and thawing.
Stability:	Shelf life: one year from despatch.
Gene Name:	integrin subunit alpha L
Database Link:	<u>Entrez Gene 3683 Human P20701</u>
Background:	CD11a a 180kD glycoprotein expressed by all human leucocytes. The molecule is involved in cell-cell adhesion processes and binds to ICAM-1, 2 and 3.
Synonyms:	Integrin alpha-L, LFA1, LFA-1



[View online »](#)

Product images:

Staining of human peripheral blood lymphocytes
with MOUSE ANTI HUMAN CD11a