

Product datasheet for **SM1080A**

CD11a (ITGAL) Mouse Monoclonal Antibody [Clone ID: 38]

Product data:

Product Type:	Primary Antibodies
Clone Name:	38
Applications:	FC, FN, IHC, IP
Recommended Dilution:	<u>Flow cytometry</u> : 1/50 - 1/100; use 5 µl of the suggested working dilution to label 10e6 cells in 100µl. <u>Functional Assays</u> . <u>Immunoprecipitation</u> . <u>Immunohistochemistry on frozen sections</u> . Recommended positive control tissue: Human Tonsil.
Reactivity:	Human
Host:	Mouse
Isotype:	IgG2a
Clonality:	Monoclonal
Specificity:	This antibody recognises the integrin alphaL subunit, a 180kD glycoprotein expressed by all human leucocytes. The molecule is involved in cell-cell adhesion processes and binds to ICAM-1, 2 and 3. This antibody neutralises CD11a mediated adhesion.
Formulation:	State: Azide Free State: Liquid purified IgG
Concentration:	lot specific
Purification:	Affinity chromatography on Protein G
Conjugation:	Unconjugated
Storage:	Store the antibody at -20°C. Avoid repeated freezing and thawing.
Stability:	Shelf life: one year from despatch.
Gene Name:	integrin subunit alpha L
Database Link:	<u>Entrez Gene 3683 Human P20701</u>



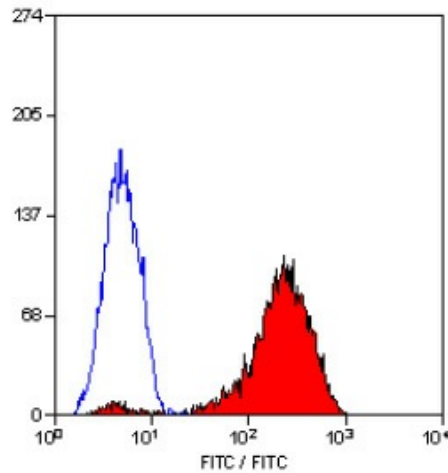
[View online »](#)

Background:

CD11a is a member of the integrin family of cell adhesion molecules. It is a glycoprotein expressed in combination with the CD18 beta chain. The complex is a member of the beta 2 integrin family. These molecules function in cell adhesion and specifically bind to CD54, ICAM2, ICAM3. CD11a is expressed on thymocytes, T and B lymphocytes, granulocytes, monocytes, and macrophages.

Synonyms:

Integrin alpha-L, LFA1, LFA-1

Product images:

Staining of human peripheral blood lymphocytes with MOUSE ANTI HUMAN CD11a:AZIDE FREE