

## Product datasheet for **SM1076R**

### CD18 (ITGB2) Rat Monoclonal Antibody [Clone ID: YFC118.3]

#### Product data:

Product Type:	Primary Antibodies
Clone Name:	YFC118.3
Applications:	FC
Recommended Dilution:	Flow cytometry: Use 10 µl of neat antibody to label 100 µl whole blood or 10e6 cells in 100 µl.
Reactivity:	Canine, Human
Host:	Rat
Isotype:	IgG2b
Clonality:	Monoclonal
Immunogen:	Human neutrophils. Spleen cells from immunised LOU rats were fused with cells of the Y3/Ag.1.2.3 rat myeloma cell line.
Specificity:	YFC118.3 was clustered at the Fourth International Workshop on Leucocyte Differentiation Antigen as recognising the CD18 antigen. The main cellular reactivity of antibody YFC 118.3 is a strong reactivity with Leucocytes (platelets negative). YFC118.3 blocks homotypic adhesion and other lymphocyte functions which involve the LFA-1 antigen.
Formulation:	PBS, pH7.2 containing 0.09% Sodium Azide and 1% Bovine Serum Albumin Label: PE State: Lyophilized purified IgG Label: R. Phycoerythrin (RPE)
Reconstitution Method:	SM1076R: Restore with 1 ml distilled water. SM1076RT: Restore with 25 µl distilled water.
Purification:	Affinity chromatography on Protein G
Conjugation:	PE
Storage:	Prior to and following reconstitution store the antibody at 2-8°C. DO NOT FREEZE! This product is photosensitive and should be protected from light.
Stability:	Shelf life: one year from despatch.
Gene Name:	integrin subunit beta 2



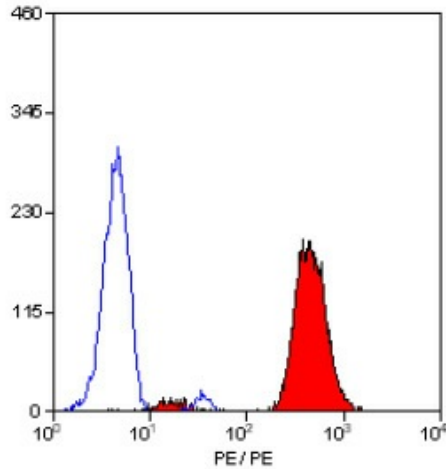
[View online »](#)

Database Link: [Entrez Gene 3689 Human P05107](#)

**Background:** The CD18 antigen is an integral membrane glycoprotein of 95kD molecular weight - known as the b chain, of the LFA-1 complex. The CD18 antigen is non-covalently linked to CD11a, b, c molecules. The CD18 molecule is the receptor for ICAM-1 and is thus important for cell adhesion.

**Synonyms:** Integrin beta-2, MFI7

**Product images:**



Staining of human peripheral blood granulocytes with RAT ANTI HUMAN CD18:RPE