

Product datasheet for **SM1076P**

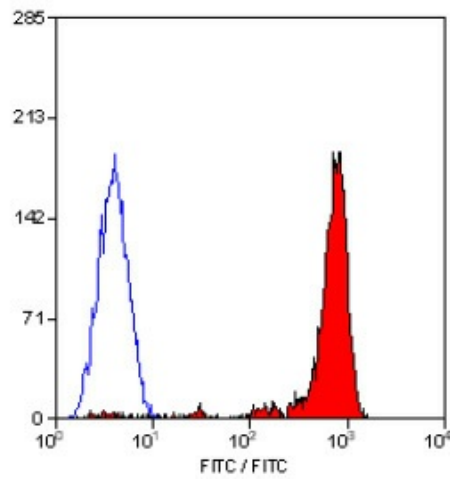
CD18 (ITGB2) Rat Monoclonal Antibody [Clone ID: YFC118.3]

Product data:

Product Type:	Primary Antibodies
Clone Name:	YFC118.3
Applications:	FC, IHC, IP
Recommended Dilution:	<u>Flow Cytometry</u> : 1/50 - 1/100; use 10 µl of the suggested working dilution to label 10e6 cells in 100µl. <u>Immunoprecipitation</u> . <u>Immunohistochemistry on frozen sections</u> : 1/1000 - 1/5000. Recommended positive control: Human Tonsil.
Reactivity:	Canine, Human
Host:	Rat
Isotype:	IgG2b
Clonality:	Monoclonal
Immunogen:	Human neutrophils. Spleen cells from immunised LOU rats were fused with cells of the rat Y3/Ag.1.2.3 myeloma cell line.
Specificity:	This antibody recognises the CD18 cell surface antigen, the integrin b2 subunit. This antibody blocks CD18 mediated homotypic adhesion.
Formulation:	PBS, pH7.4 containing 0.09% Sodium Azide State: Purified State: Liquid purified IgG
Concentration:	lot specific
Conjugation:	Unconjugated
Storage:	Store the antibody undiluted at 2-8°C for one month or (in aliquots) at -20°C for longer. Avoid repeated freezing and thawing.
Stability:	Shelf life: one year from despatch.
Database Link:	<u>Entrez Gene 3689 Human P05107</u>
Background:	CD18 is expressed by the majority of leucocytes.
Synonyms:	Integrin beta-2, MFI7



[View online »](#)

Product images:

Staining of human peripheral blood lymphocytes
with RAT ANTI HUMAN CD18