

Product datasheet for **SM1076F**

CD18 (ITGB2) Rat Monoclonal Antibody [Clone ID: YFC118.3]

Product data:

Product Type:	Primary Antibodies
Clone Name:	YFC118.3
Applications:	FC
Recommended Dilution:	Flow Cytometry.
Reactivity:	Canine, Human
Host:	Rat
Isotype:	IgG2b
Clonality:	Monoclonal
Immunogen:	Human neutrophils. Spleen cells from immunised LOU rats were fused with cells of the Y3/Ag.1.2.3 myeloma cell line.
Specificity:	This antibody was clustered at the Fourth International Workshop on Leucocyte Differentiation Antigen as recognising the CD18 antigen. The main cellular reactivity of antibody YFC 118.3 is a strong reactivity with Leucocytes (platelets negative).
Formulation:	PBS, pH7.2 containing 0.09% Sodium Azide and 1% Bovine Serum Albumin Label: FITC State: Liquid purified IgG Label: Fluorescein Isothiocyanate Isomer 1
Purification:	Affinity chromatography on Protein G
Conjugation:	FITC
Storage:	Store the antibody undiluted at 2-8°C for one month or (in aliquots) at -20°C for longer. Avoid repeated freezing and thawing. This product is photosensitive and should be protected from light.
Stability:	Shelf life: one year from despatch.
Gene Name:	integrin subunit beta 2
Database Link:	Entrez Gene 3689 Human P05107



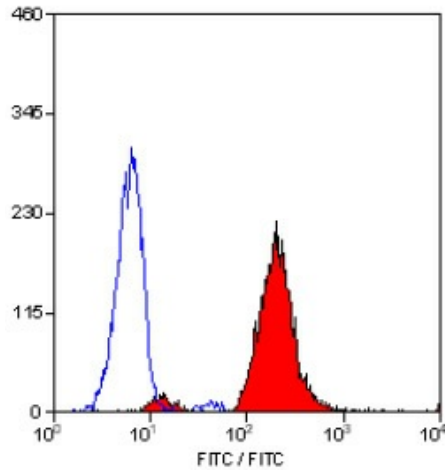
[View online »](#)

Background:

The CD18 antigen is an integral membrane glycoprotein of 95kD molecular weight - known as the beta chain, of the LFA-1 complex. The CD18 antigen is non-covalently linked to CD11a, b, c molecules. The CD18 molecule is the receptor for ICAM-1 and is thus important for cell adhesion.

Synonyms:

Integrin beta-2, MFI7

Product images:

Staining of human peripheral blood granulocytes with RAT ANTI HUMAN CD18:FITC