

## Product datasheet for **SM1074F**

### CD7 Mouse Monoclonal Antibody [Clone ID: LT7]

#### Product data:

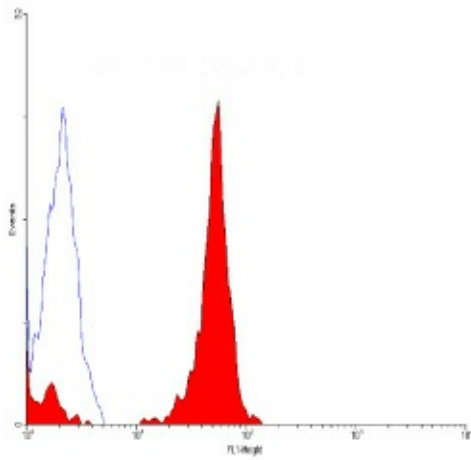
Product Type:	Primary Antibodies
Clone Name:	LT7
Applications:	FC, IHC
Recommended Dilution:	Flow cytometry.
Reactivity:	Human
Host:	Mouse
Isotype:	IgG2a
Clonality:	Monoclonal
Immunogen:	Normal human peripheral blood lymphocytes. Spleen cells from immunised BALB/c mice were fused with cells of the X63.653 mouse myeloma cell line.
Specificity:	This antibody is a single chain cell surface glycoprotein of 40kD.
Formulation:	PBS, pH7.4 containing 0.09% Sodium Azide and 1% Bovine Serum Albumin Label: FITC State: Liquid purified IgG Label: Fluorescein Isothiocyanate Isomer I
Concentration:	lot specific
Purification:	Affinity chromatography on Protein
Conjugation:	FITC
Storage:	Store the antibody undiluted at 2-8°C for one month or (in aliquots) at -20°C for longer. Avoid repeated freezing and thawing. This product is photosensitive and should be protected from light.
Stability:	Shelf life: one year from despatch.
Gene Name:	CD7 molecule
Database Link:	<a href="#">Entrez Gene 924 Human P09564</a>
Background:	CD7 is expressed by T cells, NK cells and thymocytes. CD7 is also expressed by tumour cells in some cases of acute myeloid leukaemia.



[View online »](#)

Synonyms: GP40, TP41, Leu-9

**Product images:**



staining of lymphocytes.