

## Product datasheet for **SM1073LE**

### CD16 (FCGR3A) Mouse Monoclonal Antibody [Clone ID: LNK16]

#### Product data:

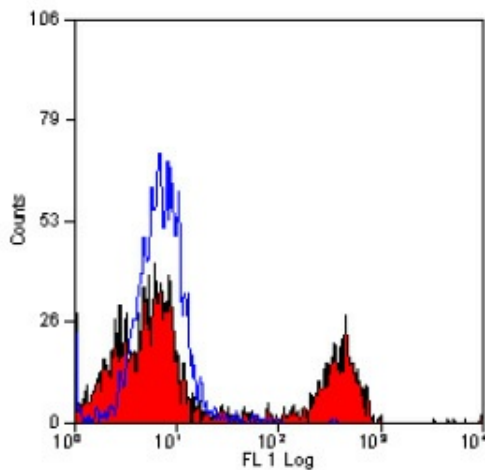
Product Type:	Primary Antibodies
Clone Name:	LNK16
Applications:	FC, IP
Recommended Dilution:	<b>Immunoprecipitation.</b> <b>Flow Cytometry:</b> Use 10 µl of 1/100-1/200 diluted antibody to label 10 <sup>6</sup> cells or 100 µl Human blood.
Reactivity:	Human
Host:	Mouse
Isotype:	IgG1
Clonality:	Monoclonal
Immunogen:	Normal Human peripheral blood granulocytes. Spleen cells from immunised BALB/c mice were fused with cells of the mouse X63.653 myeloma cell line.
Specificity:	This antibody is a 50-65kD cell surface molecule which exists in two forms - a transmembranous form expressed by NK cells and some T cells and a phosphatidylinositol linked form expressed by granulocytes. CD16 is a low affinity receptor for IgG (FcR III), and is an important receptor mediating ADCC by NK cells. This antibody has been reported to block the binding of IgG to the CD16 molecule (Ref.4)
Formulation:	PBS, pH 7.4 State: Low Endotoxin State: Liquid purified IgG fraction Stabilizer: None Preservative: None
Concentration:	lot specific
Purification:	Ion Exchange Chromatography
Conjugation:	Unconjugated
Storage:	Store the antibody undiluted at -20°C. Avoid repeated freezing and thawing.



[View online »](#)

Stability:	Shelf life: one year from despatch.
Gene Name:	Fc fragment of IgG receptor IIIa
Database Link:	<a href="#">Entrez Gene 2214 Human P08637</a>
Background:	CD16 (FcgammaRIII) serves as a low affinity IgG receptor. Human CD16 is expressed in two forms CD16a and CD16b. CD16a is a transmembrane protein of monocytes, macrophages, NK cells and a subset of T cells. CD16b is a GPI-linked monomeric receptor expressed on neutrophils and is involved in their activation and induction of a proadhesive phenotype.
Synonyms:	FCGR3A, CD16A, FCG3, FCGR3, IGFR3, Fc-gamma RIII-alpha, Fc-gamma RIII, Fc-gamma RIIIa, FcRIII, FcRIIIa, FcR-10, IgG Fc receptor III-2
Note:	<b>Endotoxin Level:</b> less than 0.01 Eu/ $\mu$ g

### Product images:



Flow Cytometry: Staining of Human peripheral blood lymphocytes with Mouse Anti Human CD16 antibody -Low Endotoxin