

Product datasheet for **SM1071R**

CD14 Mouse Monoclonal Antibody [Clone ID: UCHM1]

Product data:

Product Type:	Primary Antibodies
Clone Name:	UCHM1
Applications:	FC
Recommended Dilution:	Flow cytometry.
Reactivity:	Human, Monkey
Host:	Mouse
Isotype:	IgG2a
Clonality:	Monoclonal
Immunogen:	Human Thymocytes followed by peripheral blood mononuclear cells. Spleen cells from an immunised mouse were fused with cells of a mouse myeloma line.
Specificity:	This antibody recognises the CD14 cell surface antigen, a 55kD glycoprotein expressed by monocytes and macrophages.
Formulation:	PBS, pH7.4 containing 0.09% Sodium Azide as preservative and 1% Bovine Serum Albumin as stabilizer. Label: PE State: Lyophilized purified IgG fraction. Label: R. Phycoerythrin (RPE)
Reconstitution Method:	Restore with distilled water
Concentration:	lot specific
Purification:	Affinity chromatography on Protein G
Conjugation:	PE
Storage:	Prior to and following reconstitution store the antibody undiluted at 2-8°C. DO NOT FREEZE! This product is photosensitive and should be protected from light.
Stability:	Shelf life: one year from despatch.
Gene Name:	CD14 molecule
Database Link:	Entrez Gene 929 Human P08571



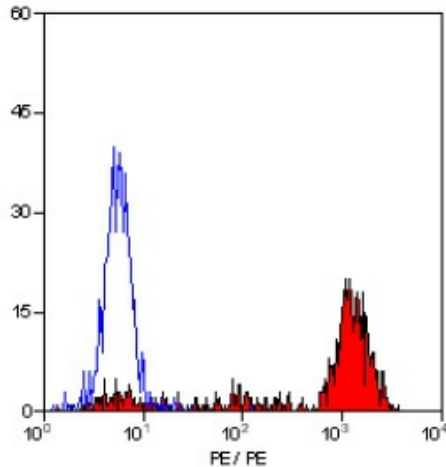
[View online »](#)

Background:

CD14 is a single copy gene encoding 2 protein forms: a 50 to 55 kDa glycosylphosphatidylinositol anchored membrane protein (mCD14) and a monocyte or liver derived soluble serum protein (sCD14) that lacks the anchor. Both molecules are critical for lipopolysaccharide (LPS) dependent signal transduction, and sCD14 confers LPS sensitivity to cells lacking mCD14. Increased sCD14 levels are associated with inflammatory infectious diseases and high mortality in gram negative shock. CD14 also appears to be involved in clearance of gram-negative bacteria via its high affinity binding to LPS-LPB complexes.

Synonyms:

CD14

Product images:

Staining of human peripheral blood monocytes with Mouse Anti Human CD14-RPE