

## Product datasheet for **SM1070R**

### CD13 (ANPEP) Mouse Monoclonal Antibody [Clone ID: WM15]

#### Product data:

Product Type:	Primary Antibodies
Clone Name:	WM15
Applications:	FC
Recommended Dilution:	Flow cytometry.
Reactivity:	Human
Host:	Mouse
Isotype:	IgG1
Clonality:	Monoclonal
Immunogen:	Human AML cells. Spleen cells from immunised BALB/c mice were fused with cells of the mouse NS1 myeloma cell line.
Specificity:	This antibody recognises the CD13 cell surface antigen.
Formulation:	PBS, pH7.4 containing 0.09% Sodium Azide and 1% Bovine Serum Albumin Label: PE State: Lyophilized purified IgG Label: R. Phycoerythrin (RPE)
Reconstitution Method:	Restore with 1 ml distilled water
Concentration:	lot specific
Purification:	Affinity chromatography on Protein A
Conjugation:	PE
Storage:	Prior to and following reconstitution store the antibody at 2-8°C. DO NOT FREEZE! This product is photosensitive and should be protected from light.
Stability:	Shelf life: one year from despatch.
Gene Name:	alanyl aminopeptidase, membrane
Database Link:	<a href="#">Entrez Gene 290 Human P15144</a>

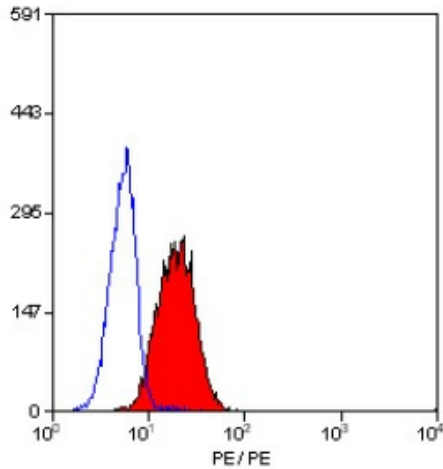


[View online »](#)

**Background:** CD13 is a 150kD glycoprotein expressed by granulocytes and monocytes, and by most tumour cells in cases of AML.

**Synonyms:** Aminopeptidase N, ANPEP, APN, PEPN

**Product images:**



Staining of human peripheral blood granulocytes with MOUSE ANTI HUMAN CD13:RPE