

## Product datasheet for **SM1070PS**

### CD13 (ANPEP) Mouse Monoclonal Antibody [Clone ID: WM15]

#### Product data:

Product Type:	Primary Antibodies
Clone Name:	WM15
Applications:	ELISA, FC, FN, IHC, IP
Recommended Dilution:	<b>ELISA.</b> <b>Flow Cytometry:</b> 5 µg/ml. <b>Immunoprecipitation.</b> <b>Immunohistochemistry on Frozen Sections.</b> <b>Functional Application:</b> The antibody clone WM15 inhibits infection of cells by Human coronavirus and inhibits aminopeptidase N activity of the CD13 molecule immunoprecipitates.
Reactivity:	Human, Primate
Host:	Mouse
Isotype:	IgG1
Clonality:	Monoclonal
Immunogen:	Human AML cells
Specificity:	The antibody recognises the Human CD13 cell surface glycoprotein, a 150 kD molecule expressed by granulocytes and monocytes, and by myeloid leukaemia cells.
Formulation:	PBS, pH~7.4 containing 15 mM Sodium Azide as preservative State: Purified State: Liquid purified Ig fraction (> 95% pure by SDS-PAGE)
Concentration:	lot specific
Purification:	Affinity Chromatography on Protein G
Conjugation:	Unconjugated
Storage:	Store undiluted at 2-8°C. <b>DO NOT FREEZE!</b>
Stability:	Shelf life: one year from despatch.
Gene Name:	alanyl aminopeptidase, membrane



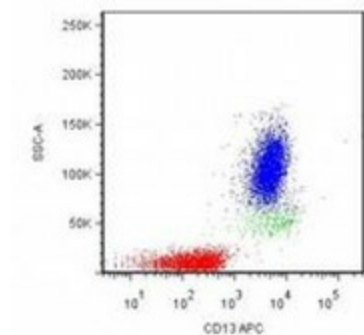
[View online »](#)

Database Link: [Entrez Gene 290 Human P15144](#)

**Background:** CD13 is a 150 kDa type II transmembrane zinc-binding ectopeptidase expressed on various cell types. This metalloprotease preferentially catalyzes removal of neutral amino acids from small peptides, thus activating or inactivating bioactive peptides. CD13 has also role in extracellular matrix degradation, antigen processing and signal transduction, is important in inflammatory responses, regulates intercellular contact, cell motility and vascularization. CD13 is involved in protection of leukemic cells against apoptosis and its expression associated with poor prognosis of carcinomas. CD13 functions as an aminopeptidase enzyme and is also a receptor for coronavirus.

**Synonyms:** Aminopeptidase N, ANPEP, APN, PEPN

**Product images:**



Surface staining of human peripheral blood leukocytes with anti-CD13 mouse monoclonal antibody WM15.