

## Product datasheet for **SM1070FC**

### CD13 (ANPEP) Mouse Monoclonal Antibody [Clone ID: WM15]

#### Product data:

Product Type:	Primary Antibodies
Clone Name:	WM15
Applications:	FC
Recommended Dilution:	<b>Flow Cytometry analysis</b> of human blood cells using 20 µl reagent / 100 µl of whole blood or 10 <sup>6</sup> cells in a suspension. The content of a vial (2 ml) is sufficient for 100 tests.
Reactivity:	Human, Primate
Host:	Mouse
Isotype:	IgG1
Clonality:	Monoclonal
Immunogen:	Human AML cells
Specificity:	This antibody recognises the human CD13 cell surface glycoprotein, a 150 kDa molecule expressed on granulocytes, endothelial cells, epithelial cells and myeloid progenitors.
Formulation:	Phosphate buffered saline (PBS) containing 15 mM sodium azide Label: FITC State: Liquid purified Ig fraction Label: Conjugated with Fluorescein isothiocyanate under optimum conditions. The reagent is free of unconjugated and adjusted for direct use.
Conjugation:	FITC
Storage:	Store the antibody at 2 - 8 °C. DO NOT FREEZE! This product is photosensitive and should be protected from light.
Stability:	Shelf life: one year from despatch.
Gene Name:	alanyl aminopeptidase, membrane
Database Link:	<a href="#">Entrez Gene 290 Human P15144</a>



[View online »](#)

**Background:**

CD13 (aminopeptidase N, APN) is a 150 kDa type II transmembrane zinc-binding ectopeptidase expressed on various cell types. This metalloprotease preferentially catalyzes removal of neutral amino acids from small peptides, thus activating or inactivating bioactive peptides. CD13 has also role in extracellular matrix degradation, antigen processing and signal transduction, is important in inflammatory responses, regulates intercellular contact, cell motility and vascularization. CD13 is involved in protection of leukemic cells against apoptosis and its expression associated with poor prognosis of carcinomas.

**Synonyms:**

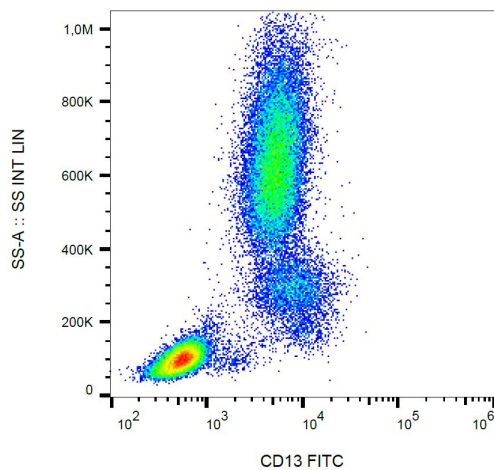
Aminopeptidase N, ANPEP, APN, PEPN

**Protein Families:**

Druggable Genome, ES Cell Differentiation/IPS, Protease, Transmembrane

**Protein Pathways:**

Glutathione metabolism, Hematopoietic cell lineage, Metabolic pathways, Renin-angiotensin system

**Product images:**

Surface staining of human peripheral blood leukocytes with anti-CD13 (WM15) FITC.