

Product datasheet for **SM1068R**

CD11b (ITGAM) Mouse Monoclonal Antibody [Clone ID: ICRF44]

Product data:

Product Type:	Primary Antibodies
Clone Name:	ICRF44
Applications:	FC
Recommended Dilution:	Flow Cytometry.
Reactivity:	Human, Monkey
Host:	Mouse
Isotype:	IgG1
Clonality:	Monoclonal
Immunogen:	Rheumatoid synovial cells and human monocytes. Spleen cells from immunised BALB/c mice were fused with cells of the SP2 mouse myeloma cell line.
Specificity:	This antibody recognises the CD11b cell surface antigen, also known as the alphaM integrin.
Formulation:	PBS containing 0.09% Sodium Azide as preservative and 1% BSA as stabilizer. Label: PE State: Lyophilized purified IgG fraction. Label: R. Phycoerythrin (RPE)
Reconstitution Method:	Restore with distilled water.
Purification:	Affinity Chromatography on Protein G
Conjugation:	PE
Storage:	Prior to and following reconstitution store the antibody undiluted at 2-8°C. DO NOT FREEZE! This product is photosensitive and should be protected from light.
Stability:	Shelf life: one year from despatch.
Gene Name:	integrin subunit alpha M
Database Link:	Entrez Gene 3684 Human P11215



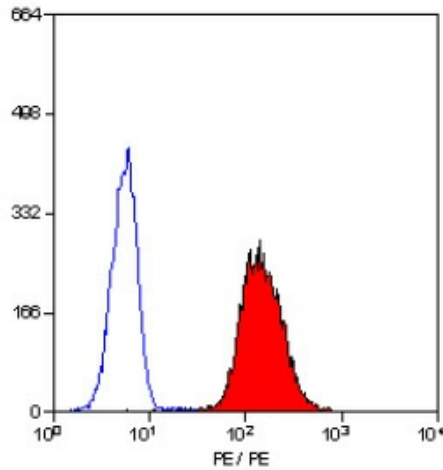
[View online »](#)

Background:

CD11b forms a heterodimer with CD18 and is expressed by circulating monocytes, granulocytes and also by dendritic reticulum cells in lymphoid tissue. Expression is increased on activated granulocytes. The CD11b molecule is the receptor for C3bi, fibrinogen and clotting factor X.

Synonyms:

ITGAM, CR3A, CR-3 alpha chain, Integrin alpha-M, MAC1

Product images:

Staining of human peripheral blood granulocytes with Mouse Anti Human CD11b-RPE