

Product datasheet for **SM1068PS**

CD11b (ITGAM) Mouse Monoclonal Antibody [Clone ID: ICRF44]

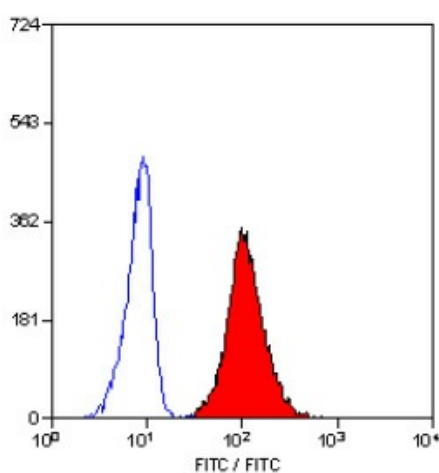
Product data:

Product Type:	Primary Antibodies
Clone Name:	ICRF44
Applications:	FC, FN, IHC, IP
Recommended Dilution:	Flow Cytometry: Use 10 µl of 1/10-1/100 diluted antibody to label 10e6 cells or 100 µl whole blood. Immunoprecipitation. Immunohistochemistry on Frozen Sections: 1/100-1/1000. The epitope recognised by this antibody is reported to be sensitive to formaldehyde fixation and tissue processing. We recommend the use of acetone fixation for frozen sections. <i>Recommended Positive Control:</i> Human tonsil.
Reactivity:	Human, Monkey
Host:	Mouse
Isotype:	IgG1
Clonality:	Monoclonal
Immunogen:	Rheumatoid synovial cells and Human mocytes. Spleen cells from immunised BALB/c mice were fused with cells of the mouse Sp2/0 myeloma cell line.
Specificity:	This antibody recognizes the CD11b cell surface glycoprotein. This antibody, clone ICRF44 has been reported to have various functional effects on monocytes, blocking adhesion and stimulating cytokine and chemokine release. Negative Species: Cat.
Formulation:	PBS State: Purified State: Liquid purified IgG fraction Preservative: 0.09% Sodium Azide
Concentration:	lot specific
Purification:	Affinity Chromatography on Protein G
Conjugation:	Unconjugated



[View online »](#)

Storage:	Store undiluted at 2-8°C for one month or (in aliquots) at -20°C for longer. Avoid repeated freezing and thawing.
Stability:	Shelf life: one year from despatch.
Gene Name:	integrin subunit alpha M
Database Link:	Entrez Gene 3684 Human P11215
Background:	CD11b is a 165kD molecule also known as the alphaM integrin, MAC-1 and CR3. This molecule is expressed as a heterodimer in association with the beta 2 integrin, and is found upon monocytes, granulocytes, NK cells and some peripheral blood lymphocytes.
Synonyms:	ITGAM, CR3A, CR-3 alpha chain, Integrin alpha-M, MAC1

Product images:

Staining of human peripheral blood granulocytes with Mouse Anti Human CD11b