

Product datasheet for **SM1068P**

CD11b (ITGAM) Mouse Monoclonal Antibody [Clone ID: ICRF44]

Product data:

Product Type:	Primary Antibodies
Clone Name:	ICRF44
Applications:	FC, FN, IHC, IP
Recommended Dilution:	Flow Cytometry: Use 10 µl of 1/10-1/100 diluted antibody to label 10 ⁶ cells or 100 µl whole blood. Immunoprecipitation. Immunohistochemistry on Frozen Sections: 1/100-1/1000. The epitope recognised by this antibody is reported to be sensitive to formaldehyde fixation and tissue processing. We recommend the use of acetone fixation for frozen sections. <i>Recommended Positive Control:</i> Human tonsil. Not suitable for Paraffin Embedded Sections.
Reactivity:	Human, Monkey
Host:	Mouse
Isotype:	IgG1
Clonality:	Monoclonal
Immunogen:	Rheumatoid synovial cells and Human monocytes.
Specificity:	This antibody recognizes the CD11b cell surface glycoprotein. Clone ICRF44 has been reported to have various functional effects on monocytes, blocking adhesion and stimulating cytokine and chemokine release.
Formulation:	PBS State: Purified State: Liquid purified IgG fraction Preservative: 0.09% Sodium Azide
Concentration:	lot specific
Purification:	Affinity Chromatography on Protein G
Conjugation:	Unconjugated
Storage:	Store undiluted at 2-8°C for one month or (in aliquots) at -20°C for longer. Avoid repeated freezing and thawing.
Stability:	Shelf life: one year from despatch.



[View online »](#)

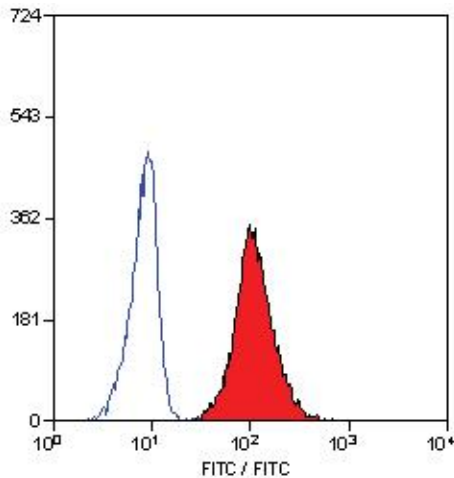
Gene Name: integrin subunit alpha M

Database Link: [Entrez Gene 3684 Human P11215](#)

Background: CD11b is a 165 kD molecule also known as the alpha-M integrin, MAC-1 and CR3. This molecule is expressed as a heterodimer in association with the beta-2 integrin and is found on monocytes, granulocytes, NK cells and some peripheral blood lymphocytes. ICR44 significantly blocks homotypic PNM aggregation on response to FMLP (3,4).

Synonyms: ITGAM, CR3A, CR-3 alpha chain, Integrin alpha-M, MAC1

Product images:



Staining of human peripheral blood granulocytes with Mouse anti Human CD11b.