

## Product datasheet for **SM1068FT**

### CD11b (ITGAM) Mouse Monoclonal Antibody [Clone ID: ICRF44]

#### Product data:

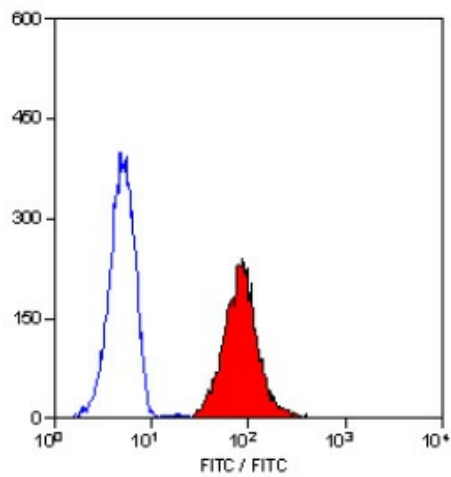
Product Type:	Primary Antibodies
Clone Name:	ICRF44
Applications:	FC
Recommended Dilution:	Flow Cytometry: Use 10 µl of neat-1/10 diluted antibody to label to label 10e6 cells in 100 µl.
Reactivity:	Human, Monkey
Host:	Mouse
Isotype:	IgG1
Clonality:	Monoclonal
Immunogen:	Rheumatoid synovial cells and human monocytes. Spleen cells from immunised BALB/c mice were fused with cells of the mouse Sp2/0 myeloma cell line.
Specificity:	This antibody recognises the CD11b cell surface glycoprotein.
Formulation:	PBS, pH7.4 containing 0.09% Sodium Azide as preservative and 1% BSA as stabilizer. Label: FITC State: Liquid purified IgG fraction. Label: Fluorescein Isothiocyanate Isomer 1
Concentration:	lot specific
Purification:	Affinity Chromatography on Protein G.
Conjugation:	FITC
Storage:	Store the antibody undiluted at 2-8°C for one month or (in aliquots) at -20°C for longer. This product is photosensitive and should be protected from light. Avoid repeated freezing and thawing.
Stability:	Shelf life: one year from despatch.
Gene Name:	integrin subunit alpha M
Database Link:	<a href="#">Entrez Gene 3684 Human P11215</a>
Background:	CD11b is a 165kD molecule also known as the alpha M integrin, MAC-1 and CR3. This molecule is expressed as a heterodimer in association with the beta 2 integrin, and is found upon monocytes, granulocytes, NK cells and some peripheral blood lymphocytes.



[View online »](#)

Synonyms: ITGAM, CR3A, CR-3 alpha chain, Integrin alpha-M, MAC1

### Product images:



Staining of human peripheral blood granulocytes  
with MOUSE ANTI HUMAN CD11b:FITC