

## Product datasheet for **SM1066P**

### CD14 Mouse Monoclonal Antibody [Clone ID: Tük4]

#### Product data:

Product Type:	Primary Antibodies
Clone Name:	Tük4
Applications:	ELISA, FC, WB
Recommended Dilution:	<b>ELISA.</b> <b>Western Blot</b> (Reducing Conditions). <b>Flow Cytometry:</b> Use 5 µl of 1/50-1/200 diluted antibody to label 10e6 cells or 100 µl whole blood.
Reactivity:	Bovine, Canine, Feline, Goat, Human, Mink, Monkey, Porcine, Rabbit, Sheep
Host:	Mouse
Isotype:	IgG2a
Clonality:	Monoclonal
Specificity:	SM1066P recognises the CD14 cell surface antigen, expressed strongly by most peripheral blood monocytes and weakly on granulocytes. Clone TÜK4 has been shown to block SDF-induced chemotaxis of U937 cells in a dose-dependent manner (6). We recommend the use of SM1066LE for this purpose.
Formulation:	PBS containing 0.09% Sodium Azide as preservative. State: Purified State: Liquid purified IgG fraction.
Concentration:	lot specific
Purification:	Affinity Chromatography on Protein G.
Conjugation:	Unconjugated
Storage:	Store the antibody undiluted at 2-8°C for one month or (in aliquots) at -20°C for longer. Avoid repeated freezing and thawing.
Stability:	Shelf life: one year from despatch.
Gene Name:	CD14 molecule
Database Link:	<a href="#">Entrez Gene 929 Human P08571</a>



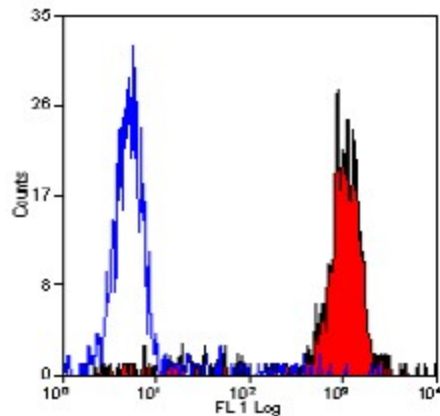
[View online »](#)

**Background:**

CD14 is a single copy gene encoding 2 protein forms: a 50 to 55 kDa glycosylphosphatidylinositol anchored membrane protein (mCD14) and a monocyte or liver derived soluble serum protein (sCD14) that lacks the anchor. Both molecules are critical for lipopolysaccharide (LPS) dependent signal transduction, and sCD14 confers LPS sensitivity to cells lacking mCD14. Increased sCD14 levels are associated with inflammatory infectious diseases and high mortality in gram negative shock. CD14 also appears to be involved in clearance of gram-negative bacteria via its high affinity binding to LPS-LPB complexes.

**Synonyms:**

CD14

**Product images:**

Staining of human peripheral blood monocytes probed with Mouse anti Human CD14 (SM1066P)