

## Product datasheet for **SM1066F**

### CD14 Mouse Monoclonal Antibody [Clone ID: Tük4]

#### Product data:

Product Type:	Primary Antibodies
Clone Name:	Tük4
Applications:	FC
Recommended Dilution:	<b>Flow Cytometry:</b> Use 10 µl of neat-1/10 diluted antibody to label 10 <sup>6</sup> cells or 100 µl whole blood.
Reactivity:	Bovine, Canine, Feline, Goat, Human, Mink, Monkey, Porcine, Rabbit, Sheep, Llama
Host:	Mouse
Isotype:	IgG2a
Clonality:	Monoclonal
Immunogen:	CD14 Human
Specificity:	This antibody recognises the CD14 cell surface antigen. CD14 is expressed strongly by most peripheral blood monocytes and weakly on granulocytes. Clone <i>TÜK4</i> has been shown to block SDF-induced chemotaxis of U937 cells in a dose-dependent manner (6). SM1066LE is recommended for this purpose.
Formulation:	PBS Label: FITC State: Liquid purified IgG fraction Stabilizer: 1% BSA Preservative: 0.09% Sodium Azide Label: Fluorescein Isothiocyanate Isomer 1
Concentration:	lot specific
Purification:	Affinity Chromatography on Protein G
Conjugation:	FITC
Storage:	Store undiluted at 2-8°C for one month or (in aliquots) at -20°C for longer. This product is photosensitive and should be protected from light. Avoid repeated freezing and thawing.
Stability:	Shelf life: one year from despatch.
Gene Name:	CD14 molecule



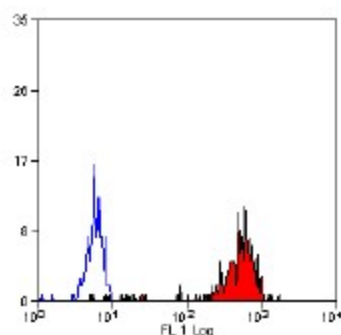
[View online »](#)

**Database Link:** [Entrez Gene 929 Human P08571](#)

**Background:** CD14 (also known lipopolysaccharide (LPS) receptor) is expressed strongly on monocytes and macrophage and weakly on the surface of neutrophils. CD14 is anchored to cells by linkage to glycosylphosphatidylinositol (GPI) and functions as a high affinity receptor for complexes of LPS and LPS binding protein (LBP). Soluble CD14, also binding to LPS, acts at physiological concentration as an LPS agonist and has, at higher concentrations, an LPS antagonizing effect in cell activation.

**Synonyms:** CD14

**Product images:**



Staining of human peripheral blood monocytes probed with anti-CD14:FITC