

## Product datasheet for **SM1058RT**

### CD4 Mouse Monoclonal Antibody [Clone ID: RPA-T4]

#### Product data:

Product Type:	Primary Antibodies
Clone Name:	RPA-T4
Applications:	FC
Recommended Dilution:	Flow Cytometry: Use 10 µl of neat-1/10 diluted antibody to label 10e6 cells or 100 µl of whole blood.
Reactivity:	Human
Host:	Mouse
Isotype:	IgG1
Clonality:	Monoclonal
Immunogen:	Human PHA blasts. Spleen cells from immunised BALB/c mice were fused with cells of the mouse NS1 myeloma cell line.
Specificity:	This antibody recognises CD4. Epitope mapping studies have shown that antibodies, produced by clone RPA-T4, recognise an epitope within domain 1, of the extracellular region, of the CD4 molecule. Clone RPA-T4 has been reported to block gp120-CD4 interaction and inhibit syncytium formation. We recommend the use of SM1058LE for this purpose.
Formulation:	PBS, pH 7.4 containing 0.09% Sodium Azide as preservative and 1% BSA as stabilizer. Label: PE State: Lyophilized purified IgG fraction. Label: R. Phycoerythrin (RPE)
Reconstitution Method:	Restore with distilled water
Concentration:	lot specific
Purification:	Affinity Chromatography on Protein G
Conjugation:	PE
Storage:	Prior to and following reconstitution store the antibody at 2-8°C. <b>DO NOT FREEZE!</b> This product is photosensitive and should be protected from light.
Stability:	Shelf life: one year from despatch.



[View online »](#)

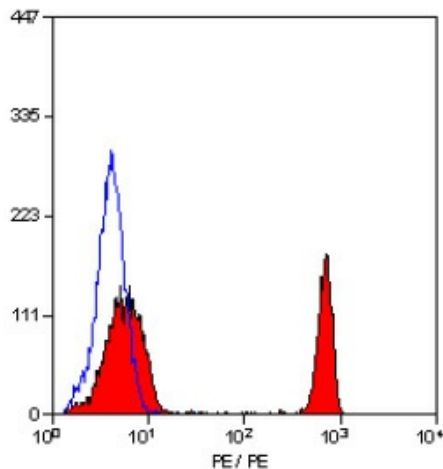
Gene Name: CD4 molecule

Database Link: [Entrez Gene 920 Human P01730](#)

Background: CD4 is a 55kD cell surface glycoprotein that is primarily expressed on a subpopulation of T lymphocytes, on peripheral blood monocytes and on tissue macrophages.

Synonyms: T-cell surface antigen T4/Leu-3

### Product images:



Staining of human peripheral blood lymphocytes with MOUSE ANTI HUMAN CD4:RPE.