

Product datasheet for **SM1058P**

CD4 Mouse Monoclonal Antibody [Clone ID: RPA-T4]

Product data:

Product Type:	Primary Antibodies
Clone Name:	RPA-T4
Applications:	FC, IHC
Recommended Dilution:	<u>Flow cytometry</u> : 1/50 - 1/100; Use 10µl of the suggested working dilution to label 10e6 cells or 100µl whole blood. <u>Immunohistochemistry on frozen sections</u> : 1/10 - 1/100. Recommended positive control: Human lymphatic tissue.
Reactivity:	Human
Host:	Mouse
Isotype:	IgG1
Clonality:	Monoclonal
Immunogen:	Human PHA blasts. Spleen cells from immunised BALB/c mice were fused with cells of the mouse NS1 myeloma cell line.
Specificity:	This antibody recognises CD4. Epitope mapping studies have shown that antibodies, produced by clone RPA-T4, recognise an epitope within domain 1, of the extracellular region, of the CD4 molecule. Clone RPA-T4 has been reported to block gp120-CD4 interaction and inhibit syncytium formation. We recommend the use of SM1058LE for this purpose.
Formulation:	PBS, pH7.4 containing 0.09% Sodium Azide State: Purified State: Liquid purified IgG
Concentration:	lot specific
Purification:	Affinity chromatography on Protein G
Conjugation:	Unconjugated
Storage:	Store the antibody undiluted at 2-8°C for one month or (in aliquots) at -20°C for longer. Avoid repeated freezing and thawing.
Stability:	Shelf life: one year from despatch.
Gene Name:	CD4 molecule



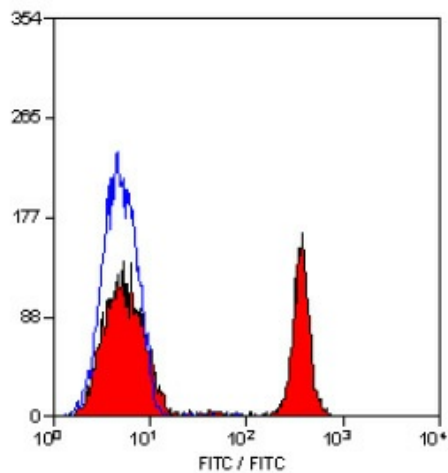
[View online »](#)

Database Link: [Entrez Gene 920 Human P01730](#)

Background: CD4 is a 55kD cell surface glycoprotein that is primarily expressed on a subpopulation of T lymphocytes, on peripheral blood monocytes and on tissue macrophages.

Synonyms: T-cell surface antigen T4/Leu-3

Product images:



Staining of human peripheral blood lymphocytes with MOUSE ANTI HUMAN CD4