

Product datasheet for **SM1050PE**

Cd19 Rat Monoclonal Antibody [Clone ID: 1D3]

Product data:

| | |
|-----------------------|--|
| Product Type: | Primary Antibodies |
| Clone Name: | 1D3 |
| Applications: | FC |
| Recommended Dilution: | Flow cytometry: 1 µg/ml. |
| Reactivity: | Mouse |
| Host: | Rat |
| Isotype: | IgG2a |
| Clonality: | Monoclonal |
| Immunogen: | Mouse CD19-transfected cell line |
| Specificity: | This antibody detects mouse CD19, 95 kDa type I transmembrane glycoprotein (immunoglobulin superfamily) expressed on B lymphocytes and follicular dendritic cells; it is lost on plasma cells. |
| Formulation: | PBS, pH 7.4 Label: PE State: Liquid purified Ig fraction Preservative: 15 mM sodium azide Label: Conjugated with R-Phycoerythrin under optimum conditions. The conjugate is purified by size-exclusion chromatography. |
| Concentration: | lot specific |
| Conjugation: | PE |
| Storage: | Store the antibody at 2 - 8 °C. DO NOT FREEZE! This product is photosensitive and should be protected from light. |
| Stability: | Shelf life: one year from despatch. |
| Gene Name: | CD19 antigen |
| Database Link: | Entrez Gene 12478 Mouse P25918 |



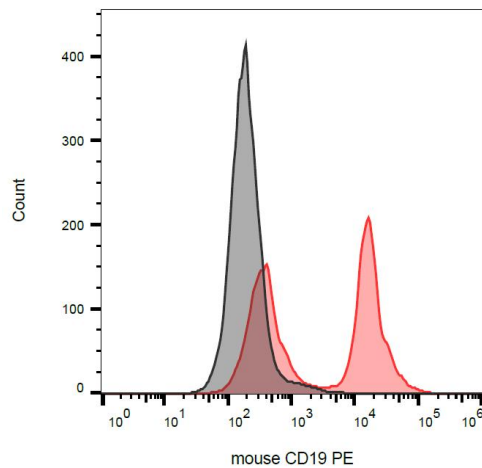
[View online »](#)

Background:

CD19 is a transmembrane glycoprotein of Ig superfamily expressed by B cells from the time of heavy chain rearrangement until plasma cell differentiation. It forms a tetrameric complex with CD21 (complement receptor type 2), CD81 (TAPA-1) and Leu13. Together with BCR (B cell antigen receptor), this complex signals to decrease B cell threshold for activation by the antigen. Besides being signal-amplifying coreceptor for BCR, CD19 can also signal independently of BCR coligation and it turns out to be a central regulatory component upon which multiple signaling pathways converge. Mutation of the CD19 gene results in hypogammaglobulinemia, whereas CD19 overexpression causes B cell hyperactivity.

Synonyms:

Leu-12, B-cell marker

Product images:

Surface staining of CD19 in murine splenocytes with anti-CD19 (1D3) PE.