

## Product datasheet for **SM084R**

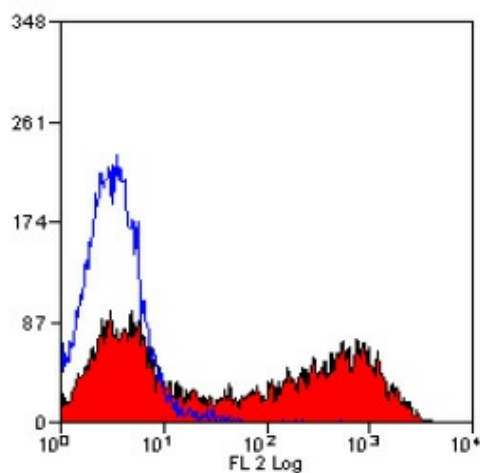
### MHC Class II RT1B (monomorphic) Mouse Monoclonal Antibody [Clone ID: OX-6]

#### Product data:

Product Type:	Primary Antibodies
Clone Name:	OX-6
Applications:	FC
Recommended Dilution:	Flow Cytometry: Neat - 1/10; Use 10µl of the suggested working dilution to label 10e6 cells in 100µl.
Reactivity:	Mouse, Rat
Host:	Mouse
Isotype:	IgG1
Clonality:	Monoclonal
Immunogen:	Rat Thymocyte membrane glycoprotein. Spleen cells from immunised BALB/c mice were fused with cells of the NS1 mouse myeloma cell line.
Specificity:	This antibody recognises a monomorphic determinant of the rat I-A antigen present on B lymphocytes, dendritic cells, some macrophages and certain epithelial cells. This antibody cross reacts with certain mouse strains of MHC haplotypes k and s. Analysis of recombinant mouse strains showed that the determinants mapped to the I-A region. The clone does not recognise the Rat BDIX strain.
Formulation:	PBS, pH7.2 containing 0.09% Sodium Azide and 1% Bovine Serum Albumin Label: PE State: Lyophilized purified IgG Label: R. Phycoerythrin (RPE)
Reconstitution Method:	Restore with 1 ml distilled water
Purification:	Affinity chromatography on Protein G
Conjugation:	PE
Storage:	Prior to and following reconstitution store the antibody at 2-8°C. DO NOT FREEZE! This product is photosensitive and should be protected from light.
Stability:	Shelf life: one year from despatch.
Synonyms:	HLA Class II, MHC Class 2 RT1B



[View online »](#)

**Product images:**

Staining of rat spleen cells with mouse anti rat RT1B: RPE