

## Product datasheet for **SM084PX**

### MHC Class II RT1B (monomorphic) Mouse Monoclonal Antibody [Clone ID: OX-6]

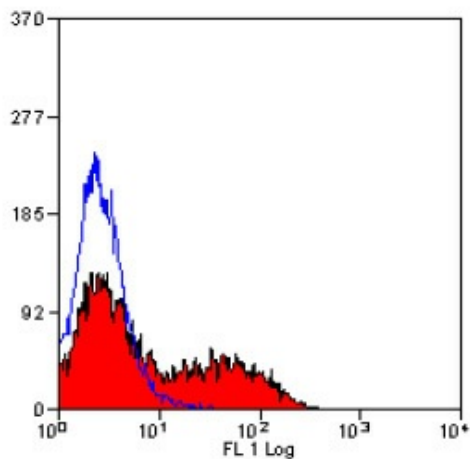
#### Product data:

Product Type:	Primary Antibodies
Clone Name:	OX-6
Applications:	FC, IHC, WB
Recommended Dilution:	<b>Western Blot.</b> <b>Flow Cytometry: Use 10 µl of 1/50-1/100 diluted antibody to label 10e6 cells in 100 µl.</b> <b>Immunohistochemistry on Frozen Sections.</b> <b>Immunohistochemistry on Paraffin Sections: 1/50-1/100. This product does not require antigen retrieval using heat treatment or protein digestion prior to staining of formalin-fixed paraffin-embedded sections, but results may be enhanced with heat treatment using 0.01M citrate buffer pH6.</b> <b>This clone has also been described reacting with paraffin-embedded material following PLP fixation (periodate-lysine-paraformaldehyde).</b>
Reactivity:	Rat
Host:	Mouse
Isotype:	IgG1
Clonality:	Monoclonal
Immunogen:	Rat thymocyte membrane glycoprotein. Spleen cells from immunised BALB/c mice were fused with cells of the NS1 mouse myeloma cell line.
Specificity:	This antibody recognises a monomorphic determinant of the rat I-A antigen present on B lymphocytes, dendritic cells, some macrophages and certain epithelial cells. This antibody cross reacts with certain mouse strains of MHC haplotypes k and s. Analysis of recombinant mouse strains showed that the determinants mapped to the I-A region. This antibody does not react with the BDIX rat strain. Expression is polymorphic in mice.
Formulation:	PBS, pH 7.2 containing 0.09% Sodium Azide as preservative State: Purified State: Liquid purified IgG fraction
Concentration:	lot specific
Purification:	Affinity Chromatography on Protein G



[View online »](#)

Conjugation:	Unconjugated
Storage:	Store the antibody undiluted at 2-8°C for one month or (in aliquots) at -20°C for longer. Avoid repeated freezing and thawing.
Stability:	Shelf life: one year from despatch.
Synonyms:	HLA Class II, MHC Class 2 RT1B

**Product images:**

Staining of rat spleen cells with mouse anti rat RT1B