

## Product datasheet for **SM084PS**

### MHC Class II RT1B (monomorphic) Mouse Monoclonal Antibody [Clone ID: OX-6]

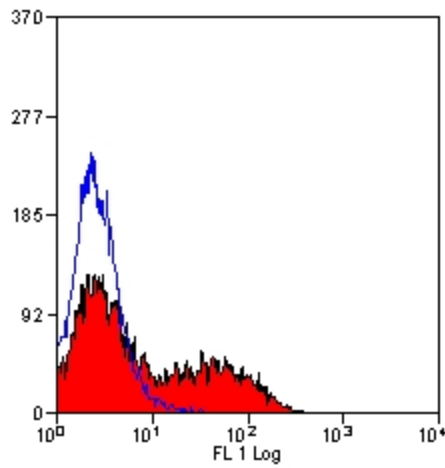
#### Product data:

Product Type:	Primary Antibodies
Clone Name:	OX-6
Applications:	FC, IHC
Recommended Dilution:	<b>Flow Cytometry:</b> Use 10 µl of 1/50-1/100 diluted antibody to label 10e6 cells in 100 µl. <b>Immunohistochemistry on Frozen Sections.</b> <b>Immunohistochemistry on Paraffin Sections:</b> 1/50-1/100. This product does not require antigen retrieval using heat treatment or protein digestion prior to staining of formalin-fixed paraffin-embedded sections, but results may be enhanced with heat treatment using 0.01M citrate buffer pH6. This clone has also been described reacting with paraffin-embedded material following PLP fixation (periodate-lysine-paraformaldehyde). (4)
Reactivity:	Rat
Host:	Mouse
Isotype:	IgG1
Clonality:	Monoclonal
Immunogen:	Rat thymocyte membrane glycoprotein. Spleen cells from immunised BALB/c mice were fused with cells of the NS1 mouse myeloma cell line.
Specificity:	This antibody recognises a monomorphic determinant of the rat I-A antigen present on B lymphocytes, dendritic cells, some macrophages and certain epithelial cells. This antibody also cross reacts with a polymorphic determinant on mouse strains of the H-2 haplotypes k and s. Analysis of recombinant mouse strains has mapped the OX6 determinant to the H-2I-A region. (1, 6). The clone does not react with the rat BDIX strain due to a defect in RT1B expression.(6) Expression is polymorphic in mice.
Formulation:	PBS, pH7.2 containing 0.09% Sodium Azide as preservative. State: Purified State: Liquid purified IgG fraction.
Concentration:	lot specific
Purification:	Affinity Chromatography on Protein G



[View online »](#)

Conjugation:	Unconjugated
Storage:	Store the antibody undiluted at 2-8°C for one month or (in aliquots) at -20°C for longer. Avoid repeated freezing and thawing.
Stability:	Shelf life: one year from despatch.
Background:	The major histocompatibility complex (MHC) is a cluster of genes that are important in the immune response to infections. In rats, this complex is referred to as the RT1 region. In mice, this complex is referred to as the H2 region.
Synonyms:	HLA Class II, MHC Class 2 RT1B

**Product images:**

Staining of Rat spleen cells with Mouse anti Rat RT1B MHC class II SM084PS.