

## Product datasheet for **SM084F**

### MHC Class II RT1B (monomorphic) Mouse Monoclonal Antibody [Clone ID: OX-6]

#### Product data:

Product Type:	Primary Antibodies
Clone Name:	OX-6
Applications:	FC
Recommended Dilution:	<b>Flow Cytometry:</b> Use 10 µl of Neat-1/10 diluted antibody to label 10e6 cells in 100 µl. This product is routinely tested in Flow Cytometry on rat splenocytes.
Reactivity:	Mouse, Rat
Host:	Mouse
Isotype:	IgG1
Clonality:	Monoclonal
Immunogen:	Rat thymocyte membrane glycoprotein. Spleen cells from immunised BALB/C mice were fused with cells fo the mouse NS1 myeloma cell line.
Specificity:	This antibody recognises a monomorphic determinant of the I-A antigen present on B lymphocytes, dendritic cells, some macrophages and certain epithelial cells. This antibody cross reacts with certain Mouse strains of MHC haplotypes k and s. Analysis of recombinant mouse strains has mapped the OX6 determinant to the H2IA region. (1, 6) This clone does not react with the Rat BDIX strain due to a defect in RT1B expression.(6)
Formulation:	PBS, pH 7.4 containing 0.09% Sodium Azide as preservative and 1% BSA as stabilizer Label: FITC State: Liquid purified IgG fraction. Label: Fluorescein Isothiocyanate Isomer 1
Concentration:	lot specific
Purification:	Affinity Chromatography on Protein G.
Conjugation:	FITC
Storage:	Store the antibody undiluted at 2-8°C for one month or (in aliquots) at -20°C for longer. Avoid repeated freezing and thawing. This product is photosensitive and should be protected from light.
Stability:	Shelf life: one year from despatch.

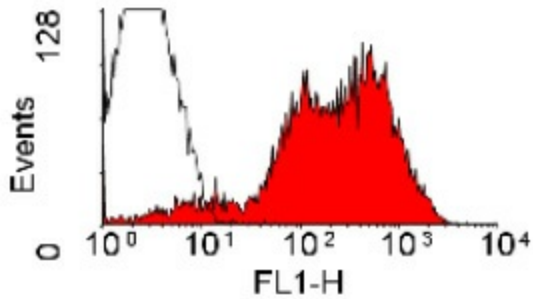


[View online »](#)

**Background:** The major histocompatibility complex (MHC) is a cluster of genes that are important in the immune response to infections. In rats, this complex is referred to as the RT1 region. In mice, this complex is referred to as the H2 region.

**Synonyms:** HLA Class II, MHC Class 2 RT1B

**Product images:**



Staining of rat spleen cells with Mouse Anti Rat RT1B (Class II Monomorphic): FITC