

Product datasheet for **SM065F**

Macrophages / Monocytes Rat Monoclonal Antibody [Clone ID: MOMA-2]

Product data:

Product Type:	Primary Antibodies
Clone Name:	MOMA-2
Applications:	FC
Recommended Dilution:	Flow Cytometry: Use 10 µl of neat-1/10 diluted antibody to label 1 ⁰ cells in 100 µl (Membrane permeabilisation is recommended).
Reactivity:	Mouse
Host:	Rat
Isotype:	IgG2b
Clonality:	Monoclonal
Immunogen:	Mouse lymph node stroma.
Specificity:	The antibody recognizes an intracellular antigen of Mouse Macrophages and Monocytes. It reacts strongly with Macrophages in lymphoid organs such as tingible body Macrophages and Macrophages in T cell dependent areas. Reacts on all Mouse strains tested.
Formulation:	PBS Label: FITC State: Liquid purified IgG fraction Stabilizer: 1% BSA Preservative: 0.09% Sodium Azide Label: Fluorescein Isothiocyanate Isomer 1
Concentration:	lot specific
Purification:	Affinity Chromatography on Protein G
Conjugation:	FITC
Storage:	Store undiluted at 2-8°C for one month or (in aliquots) at -20°C for longer. This product is photosensitive and should be protected from light. Avoid repeated freezing and thawing.
Stability:	Shelf life: one year from despatch.



[View online »](#)

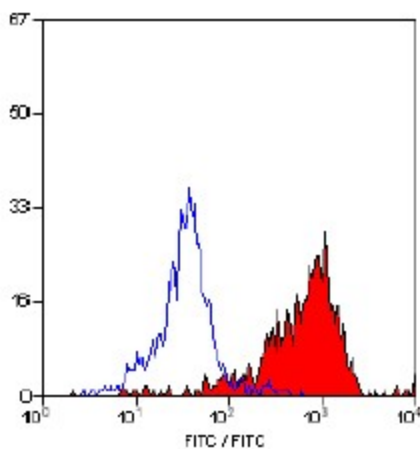
Background:

Monocyte and macrophage are white blood cells that roam the body tissues engulfing foreign organisms. A monocyte is a leukocyte, part of the human body's immune system that protects against blood-borne pathogens and moves quickly (aprox. 8-12 hours) to sites of infection in the tissues. Monocytes are usually identified in stained smears by their large bi-lobed nucleus.

Macrophages are cells within the tissues that originate from specific white blood cells called monocytes. Monocytes and macrophages are phagocytes, acting in both nonspecific defense (or innate immunity) as well as specific defense (or cell-mediated immunity) of vertebrate animals. Their role is to phagocytize (engulf and then digest) cellular debris and pathogens either as stationary or mobile cells, and to stimulate lymphocytes and other immune cells to respond to the pathogen.

Synonyms:

Macrophage marker, Monocyte marker

Product images:

Staining of mouse peritoneal macrophages with Rat anti Mouse Macrophages / Monocytes - FITC (Cat.-No SM065F)