

Product datasheet for **SM038PT**

Integrin alpha 6 (ITGA6) Rat Monoclonal Antibody [Clone ID: NKI-GoH3]

Product data:

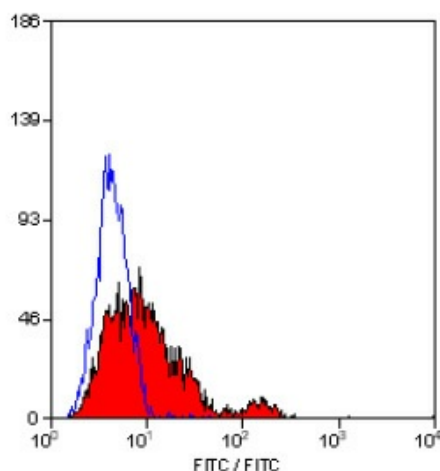
Product Type:	Primary Antibodies
Clone Name:	NKI-GoH3
Applications:	FC, IHC, IP
Recommended Dilution:	Flow cytometry. Immunoprecipitation. Immunohistochemistry on Frozen Sections. <i>Recommended Positive Control:</i> Human Tonsil.
Reactivity:	Canine, Human, Monkey, Mouse, Porcine, Sheep
Host:	Rat
Isotype:	IgG2a
Clonality:	Monoclonal
Immunogen:	BALB/c mouse mammary tumour cells. Spleen cells from immunised Sprague-Dawley rats were fused with cells of the SP2/0 mouse myeloma cell line.
Specificity:	The monoclonal antibody is directed against the CDw49f-antigen. This monoclonal <i>NKI-GoH3</i> antibody reacts with platelets, megakaryocytes, T lymphocytes and common Acute Lymphoblastic Leukaemia cells (alpha-6 beta-1). In immunohistology the monoclonal antibody reacts with epithelial cells of a variety of tissues, peripheral nerves, microvascular endothelial cells, placenta cyto- and syncytiotrophoblasts. Platelet VLA-6 functions as a laminin receptor and platelet adhesion to laminin is inhibited by <i>GoH3</i> . Studies suggest that Clone <i>NKI-GoH3</i> specifically blocks the binding of cells to the E8 fragment of laminin (See <i>Sonnenberg, A. et al.</i> for details).
Formulation:	PBS, pH 7.4 State: Purified State: Liquid purified IgG fraction Preservative: 0.09% Sodium Azide
Concentration:	lot specific
Purification:	Affinity Chromatography on Protein G
Conjugation:	Unconjugated



[View online »](#)

Storage:	Store undiluted at 2-8°C for one month or (in aliquots) at -20°C for longer. Avoid repeated freezing and thawing.
Stability:	Shelf life: one year from despatch.
Gene Name:	integrin subunit alpha 6
Database Link:	Entrez Gene 3655 Human P23229
Background:	CDw49f-antigen is a 120kD, (GP Ic or VLA-6 alpha-chain), which can form distinct complexes with either the CD29-antigen (GP 11a or VLA beta-chain), resulting in the VLA-6 (alpha-6 beta-1) complex, which is expressed on human platelets, or with the beta-4 integrin resulting in the alpha-6 beta-4 complex which is expressed on various human epithelial cells.
Synonyms:	Integrin alpha-6, VLA-6, VLA6

Product images:



Staining of human peripheral blood lymphocytes
with Rat Anti Human/Mouse CD49f Antibody
SM038P