

## Product datasheet for **SM038P**

### Integrin alpha 6 (ITGA6) Rat Monoclonal Antibody [Clone ID: NKI-GoH3]

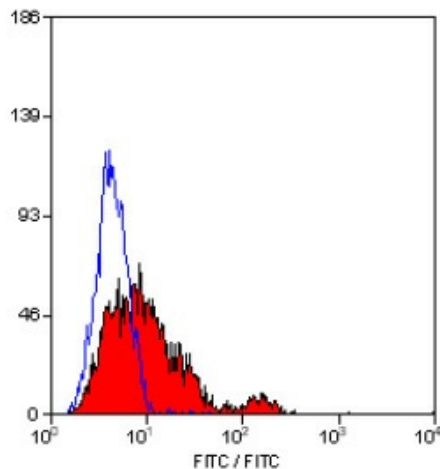
#### Product data:

Product Type:	Primary Antibodies
Clone Name:	NKI-GoH3
Applications:	FC, IHC, IP
Recommended Dilution:	<b>Flow cytometry.</b> <b>Immunoprecipitation.</b> <b>Immunohistochemistry on Frozen Sections.</b> <i>Recommended Positive Control:</i> Human Tonsil.
Reactivity:	Canine, Human, Monkey, Mouse, Porcine
Host:	Rat
Isotype:	IgG2a
Clonality:	Monoclonal
Immunogen:	BALB/c mouse mammary tumour cells. Spleen cells from immunised Sprague-Dawley rats were fused with cells of the SP2/0 mouse myeloma cell line.
Specificity:	The monoclonal antibody is directed against the CDw49f-antigen. This monoclonal <i>NKI-GoH3</i> antibody reacts with platelets, megakaryocytes, T lymphocytes and common Acute Lymphoblastic Leukaemia cells (alpha-6 beta-1). In immunohistology the monoclonal antibody reacts with epithelial cells of a variety of tissues, peripheral nerves, microvascular endothelial cells, placenta cyto- and syncytiotrophoblasts. Platelet VLA-6 functions as a laminin receptor and platelet adhesion to laminin is inhibited by <i>GoH3</i> . Studies suggest that Clone <i>NKI-GoH3</i> specifically blocks the binding of cells to the E8 fragment of laminin (See <i>Sonnenberg, A. et al.</i> for details).
Formulation:	PBS, pH 7.4 State: Purified State: Liquid purified IgG fraction Preservative: 0.09% Sodium Azide
Concentration:	lot specific
Purification:	Affinity Chromatography on Protein G
Conjugation:	Unconjugated



[View online »](#)

<b>Storage:</b>	Store undiluted at 2-8°C for one month or (in aliquots) at -20°C for longer. Avoid repeated freezing and thawing.
<b>Stability:</b>	Shelf life: one year from despatch.
<b>Gene Name:</b>	integrin subunit alpha 6
<b>Database Link:</b>	<a href="#">Entrez Gene 3655 Human P23229</a>
<b>Background:</b>	CDw49f-antigen is a 120kD, (GP Ic or VLA-6 alpha-chain), which can form distinct complexes with either the CD29-antigen (GP 11a or VLA beta-chain), resulting in the VLA-6 (alpha-6 beta-1) complex, which is expressed on human platelets, or with the beta-4 integrin resulting in the alpha-6 beta-4 complex which is expressed on various human epithelial cells.
<b>Synonyms:</b>	Integrin alpha-6, VLA-6, VLA6

**Product images:**

Staining of human peripheral blood lymphocytes with Rat Anti Human/Mouse CD49f Antibody