

Product datasheet for **SM038F**

Integrin alpha 6 (ITGA6) Rat Monoclonal Antibody [Clone ID: NKI-GoH3]

Product data:

Product Type:	Primary Antibodies
Clone Name:	NKI-GoH3
Applications:	FC
Recommended Dilution:	Flow cytometry: Use 10 ul of neat antibody to label 10e6 cells in 100 ul.
Reactivity:	Canine, Human, Monkey, Mouse, Porcine, Sheep
Host:	Rat
Isotype:	IgG2a
Clonality:	Monoclonal
Immunogen:	BALB/c mouse mammary tumour cells. Spleen cells from immunised Sprague-Dawley rats were fused with cells of the SP2/0 mouse myeloma cell line.
Specificity:	This antibody recognises CD49F (VLA-6 alpha chain). Clone NKI-GoH3 reacts with platelets, megakaryocytes, T lymphocytes and common Acute Lymphoblastic Leukaemia cells (alpha-6 beta-1). In immunohistology the monoclonal antibody reacts with epithelial cells of a variety of tissues, peripheral nerves, microvascular endothelial cells, placenta cyto- and syncytiotrophoblasts. VLA-6 is an important mediator of cell binding to laminin. Studies suggest that clone GoH3 specifically blocks the binding of cells to the E8 fragment of laminin.
Formulation:	PBS containing 0.09% Sodium Azide and 1% Bovine Serum Albumin Label: FITC State: Liquid purified IgG Label: Fluorescein Isothiocyanate Isomer 1
Concentration:	lot specific
Purification:	Affinity chromatography on Protein G
Conjugation:	FITC
Storage:	Store the antibody undiluted at 2-8°C for one month or (in aliquots) at -20°C for longer. Avoid repeated freezing and thawing. This product is photosensitive and should be protected from light.
Stability:	Shelf life: one year from despatch.
Gene Name:	integrin subunit alpha 6



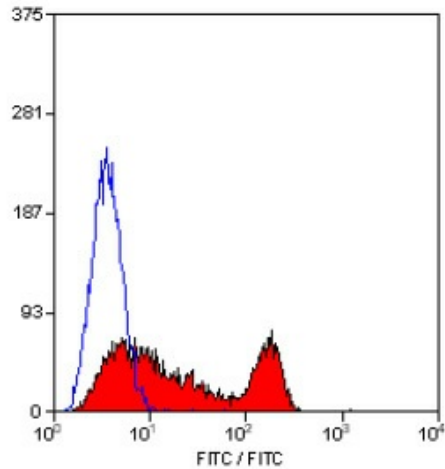
[View online »](#)

Database Link: [Entrez Gene 3655 Human P23229](#)

Background: CD49f is a 120kD cell surface glycoprotein that can form distinct complexes with CD29 (VLA beta-chain), resulting in the VLA-6 (alpha-6 beta-1) complex, which is expressed on human platelets, or with the beta-4 integrin resulting in the alpha-6 beta-4 complex which is expressed on various human epithelial cells.

Synonyms: Integrin alpha-6, VLA-6, VLA6

Product images:



Staining of human peripheral blood lymphocytes with RAT ANTI HUMAN/MOUSE CD49f:FITC