

Product datasheet for **SM034LE**

CD45 / LCA Rat Monoclonal Antibody [Clone ID: RA3-6B2]

Product data:

Product Type:	Primary Antibodies
Clone Name:	RA3-6B2
Applications:	FC, FN, IF, IHC, IP
Recommended Dilution:	Flow cytometry. Immunoprecipitation. Immunohistochemistry on paraffin sections. Immunohistochemistry on frozen sections. Immunocytochemistry. Functional application: modulation of B cell responses.
Reactivity:	Feline, Human, Mouse
Host:	Rat
Isotype:	IgG2a
Clonality:	Monoclonal
Immunogen:	Abelson murine leukemia virus-induced pre-B tumor cells
Specificity:	This antibody recognizes an epitope on CD45R, which is expressed at all developmental stages of B cells, including activated B cells, but also on subsets of NK and T cells. T cells detected by this antibody are supposed to be in activated state.
Formulation:	Phosphate buffered saline (PBS), approx. pH 7.4; 0.2 µm filter sterilized State: Low Endotoxin State: Liquid ig fraction
Concentration:	lot specific
Purification:	Protein-G affinity chromatography (> 95% pure by SDS-PAGE)
Conjugation:	Unconjugated
Storage:	Store undiluted at 2-8°C. DO NOT FREEZE!
Stability:	Shelf life: one year from despatch.
Gene Name:	protein tyrosine phosphatase, receptor type, C



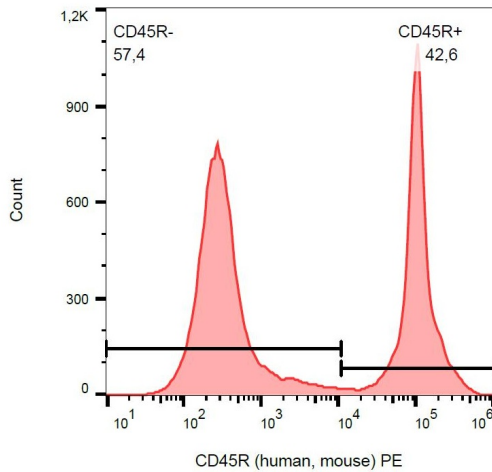
[View online »](#)

Database Link: [Entrez Gene 19264 Mouse P06800](#)

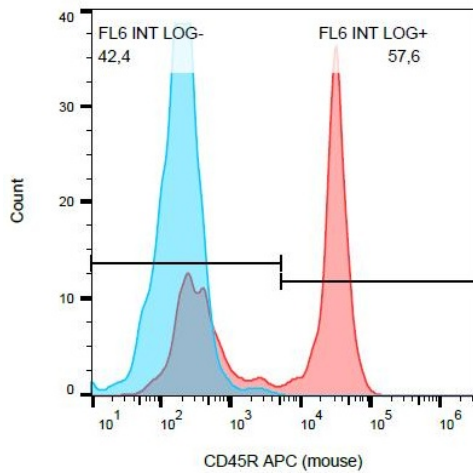
Background: CD45R, also known as B220, is a receptor-type protein tyrosine phosphatase glycoprotein. It is crucial in lymphocyte development and antigen signaling, serving as an important regulator of Src-family kinases, promotes cell survival by modulating integrin-mediated signal transduction pathway and is also involved in DNA fragmentation during apoptosis. CD45R expression also identifies a subset of murine bone marrow cells able to form osteoclast-like cells.

Synonyms: PTPRC, Leukocyte common antigen, L-CA, T200

Product images:



Surface staining of CD45R in murine splenocytes with anti-CD45R (RA3-6B2) PE.



Surface staining of CD45R in murine splenocytes with anti-CD45R (RA3-6B2) APC.