

## Product datasheet for **SM032F**

### CD45 / LCA Rat Monoclonal Antibody [Clone ID: YW 62.3]

#### Product data:

Product Type:	Primary Antibodies
Clone Name:	YW 62.3
Applications:	FC
Recommended Dilution:	Flow cytometry: The Fc region of monoclonal antibodies may bind non-specifically to cells expressing low affinity Fc receptors.
Reactivity:	Mouse
Host:	Rat
Isotype:	IgG2b
Clonality:	Monoclonal
Immunogen:	Mouse spleen cells. Spleen cells from immunised DA rat were fused with cells of the Y3/Ag1.2.3 myeloma cell line.
Specificity:	This antibody recognises the CD45 cell surface antigen, a 180-220kD glycoprotein expressed by all leucocytes.
Formulation:	PBS containing 0.09% Sodium Azide and 1% Bovine Serum Albumin Label: FITC State: Liquid purified IgG Label: Fluorescein Isothiocyanate Isomer 1
Concentration:	lot specific
Purification:	Affinity chromatography on Protein G
Conjugation:	FITC
Storage:	Store the antibody undiluted at 2-8°C for one month or (in aliquots) at -20°C for longer. Avoid repeated freezing and thawing. This product is photosensitive and should be protected from light.
Stability:	Shelf life: one year from despatch.
Gene Name:	protein tyrosine phosphatase, receptor type, C
Database Link:	<a href="#">Entrez Gene 19264 Mouse P06800</a>



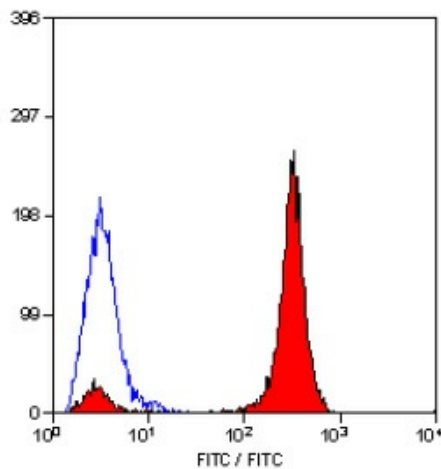
[View online »](#)

**Background:**

CD45 is a family of single chain transmembrane glycoproteins consisting of at least four isoforms (220, 205, 190, 180 kDa) which share a common large intracellular domain. Their extracellular domains are heavily glycosylated. The different isoforms are produced by alternative messenger RNA splicing of three exons of a single gene on chromosome 1. CD45 is expressed on cells of the human hematopoietic lineage (including hematopoietic stem cells) with the exception of mature red cells. It is not detected on differentiated cells of other tissues. It is likely that CD45 plays an important role in signal transduction, inhibition or upregulation of various immunological functions. Antibodies recognising a common epitope on all of the isoforms are termed CD45 whilst those recognising only individual isoforms are termed CD45RA or CD45RO etc.

**Synonyms:**

PTPRC, Leukocyte common antigen, L-CA, T200

**Product images:**

SM032F staining mouse splenocytes.