

## Product datasheet for **SM024PT**

### Cd8a Rat Monoclonal Antibody [Clone ID: YTS105.18]

#### Product data:

Product Type:	Primary Antibodies
Clone Name:	YTS105.18
Applications:	FC, IHC
Recommended Dilution:	Flow Cytometry: Use 10 µl of 1/50-1/100 diluted antibody to label 10e6 cells in 100 µl. Immunohistochemistry on Frozen Sections.
Reactivity:	Mouse
Host:	Rat
Isotype:	IgG2a
Clonality:	Monoclonal
Immunogen:	Mouse spleen cells. Spleen cells from an immunised DA rat were fused with cells of the rat Y3/Ag1.2.3. myeloma cell line.
Specificity:	This antibody recognises a non polymorphic epitope on the CD8 alpha chain. Blocks MHC I dependent T cell responses in vitro and in vivo, and induces transplantation tolerance in combination with CD4 antibodies.
Formulation:	PBS, pH 7.4 containing 0.09% Sodium Azide as preservative. State: Purified State: Liquid purified IgG fraction.
Concentration:	lot specific
Purification:	Affinity Chromatography on Protein G.
Conjugation:	Unconjugated
Storage:	Store the antibody undiluted at 2-8°C for one month or (in aliquots) at -20°C for longer. Avoid repeated freezing and thawing.
Stability:	Shelf life: one year from despatch.
Gene Name:	CD8 antigen, alpha chain
Database Link:	<a href="#">Entrez Gene 12525 Mouse P01731</a>



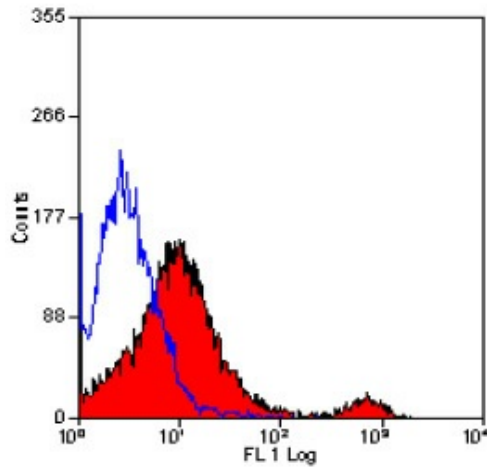
[View online »](#)

**Background:**

CD8 T cell surface antigen is heterodimer of an alpha and a beta chain linked by two disulfide bonds. It belongs type I membrane protein. Selectively expressing of CD8 on a subset of T cells leads to CD8 T cell development. Through identifying cytotoxic/suppressor T-cells that interact with MHC class I bearing targets, CD8 is thought to play a role in the process of T-cell mediated killing. Veillette et al (1988) found the CD8 is associated with the internal membrane tyrosine-protein kinase p56lck.

**Synonyms:**

CD8 alpha chain, CD8A, MAL

**Product images:**

Staining of mouse spleen cells with RAT ANTI  
MOUSE CD8