

Product datasheet for **SM018PT**

Cd19 Rat Monoclonal Antibody [Clone ID: 6D5]

Product data:

Product Type:	Primary Antibodies
Clone Name:	6D5
Applications:	FC, IHC, IP
Recommended Dilution:	Flow Cytometry: Use 10 µl of 1/25-1/100 diluted antibody to label 10 ⁶ cells in 100 µl. Immunohistochemistry on Frozen Sections. Immunoprecipitation.
Reactivity:	Mouse
Host:	Rat
Isotype:	IgG2a
Clonality:	Monoclonal
Immunogen:	Human K562 cell line transfected with Murine CD19. Spleen cells from immunised rats were fused with cells of the P3X63.Ag8.653 myeloma cell line.
Specificity:	This antibody recognises the CD19 cell surface antigen, a 95kD glycoprotein expressed by B lymphocytes. Clone 6D5 has been shown to recognise the same epitope as clone ID3 in cross-competition assays.
Formulation:	PBS, pH 7.4 State: Purified State: Liquid purified IgG fraction Preservative: 0.09% Sodium Azide
Concentration:	lot specific
Purification:	Affinity Chromatography on Protein G
Conjugation:	Unconjugated
Storage:	Store undiluted at 2-8°C for one month or (in aliquots) at -20°C for longer. Avoid repeated freezing and thawing.
Stability:	Shelf life: one year from despatch.
Gene Name:	CD19 antigen



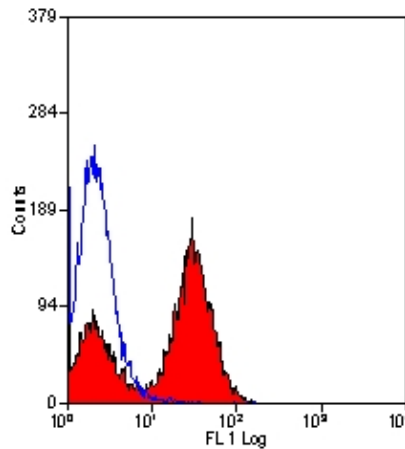
[View online »](#)

Database Link: [Entrez Gene 12478 Mouse P25918](#)

Background: CD19 is a member of the immunoglobulin superfamily and has two Ig like domains. The CD19 molecule is expressed on 100% of the peripheral B cells as defined by expression of kappa or lamda light chains. It is expressed on approximately 10% of normal human peripheral blood cells and approximately 60% of splenic lymphocytes. It is not expressed on granulocytes, monocytes or T cells as defined by CD3 expression. CD19 defines a pan B antigen which is expressed from the earliest stages of B progenitor development, but is lost on terminal differentiation to plasma cells. It may also be present on some early myeloid progenitors, particularly those of the monoblastic type. The CD19 antigen is expressed on approximately 12% of peripheral blood lymphocytes. It appears to be expressed on myeloid leukemia cells, particularly those of monocytic lineage. Leukemia phenotype studies have demonstrated that the earliest and broadest B cell restricted antigen is the CD19 antigen.

Synonyms: Leu-12, B-cell marker

Product images:



Stainin of Mouse spleen cells wit Rat Anti Mouse CD19 (SM018P).