

## Product datasheet for **SM014R**

### CD11b Rat Monoclonal Antibody [Clone ID: M1/70.15]

#### Product data:

Product Type:	Primary Antibodies
Clone Name:	M1/70.15
Applications:	FC
Recommended Dilution:	Flow Cytometry: Use 10 µl of neat-1/10 diluted antibody to label 10e6 cells in 100µl. The Fc region of monoclonal antibodies may bind non-specifically to cells expressing low affinity Fc receptors.
Reactivity:	Human, Mouse, Rabbit
Host:	Rat
Isotype:	IgG2b
Clonality:	Monoclonal
Immunogen:	T cell enriched splenocytes from B10 mice. Spleen cells from an immunised DA rat were fused with cells of the mouse NS1/1.Ag4.1 myeloma cell line.
Specificity:	This antibody recognises the murine CD11b cell surface antigen (also known as the alpha M integrin chain or MAC-1). Clone M1/70.15 has been reported to block iC3b binding to its receptor. SM014A is recommended for this purpose. Clone M1/70.15 has been reported to as being suitable for use on PLP fixed paraffin embedded tissue but has not been tested for use on formalin fixed tissue.
Formulation:	PBS, pH 7.4 containing 0.09% Sodium Azide, 1% BSA, 5% Sucrose Label: PE State: Lyophilized purified IgG fraction. Label: R. Phycoerythrin (RPE)
Reconstitution Method:	Restore with distilled water.
Purification:	Affinity Chromatography on Protein G
Conjugation:	PE
Storage:	Prior to and following reconstitution store the antibody undiluted at 2-8°C. <b>DO NOT FREEZE!</b> This product is photosensitive and should be protected from light.



[View online »](#)

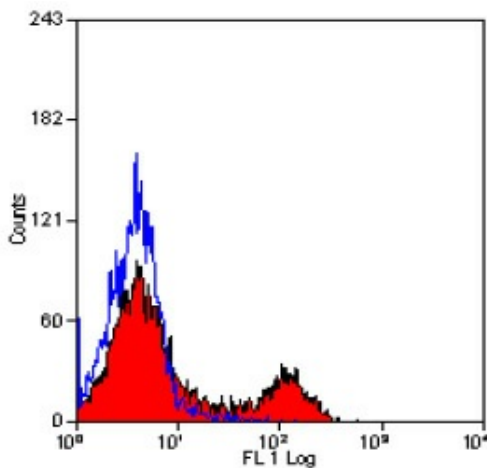
**Stability:** Shelf life: one year from despatch.

**Database Link:** [P05555](#)

**Background:** CD11b (integrin  $\alpha$ M subunit) is a 165 kDa type I transmembrane glycoprotein that non-covalently associates with integrin  $\beta$ 2 subunit (CD18); expression of the CD11b chain on the cell surface requires the presence of the CD18 antigen. CD11b/CD18 integrin (Mac-1, CR3) is highly expressed on NK cells, neutrophils, monocytes and less on macrophages. The expression of CD11b increases during monocyte maturation and expression levels vary on tissue macrophages. CD11b/CD18 integrin is implicated in various adhesive interactions of monocytes, macrophages and granulocytes, facilitating their diapedesis, as well as it mediates the uptake of complement coated particles, serving as a receptor for the iC3b fragment of the third complement component. Peritoneal macrophages are reported to express higher levels of CD11b than splenic macrophages.

**Synonyms:** ITGAM, CR3A, CR-3 alpha chain, Integrin alpha-M, MAC1

### Product images:



Staining of total mouse peritoneal exudate cells demonstrating labelling of Macrophages with Rat anti Mouse CD11b-RPE