

Product datasheet for **SM014PS**

CD11b Rat Monoclonal Antibody [Clone ID: M1/70.15]

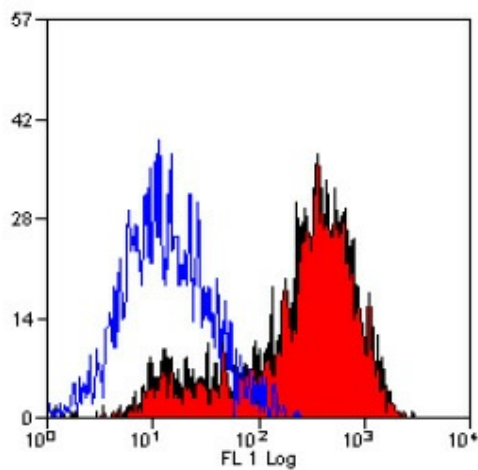
Product data:

Product Type:	Primary Antibodies
Clone Name:	M1/70.15
Applications:	FC, IF, IHC, IP, WB
Recommended Dilution:	Western blot. Flow Cytometry: 1/50-1/200. This product is routinely tested on Mouse peritoneal Macrophages. Immunoprecipitation. Immunofluorescence. Immunohistochemistry on Frozen Sections. Immunohistochemistry on Paraffin Sections: Clone M1/70.15 has been reported to as being suitable for use on PLP fixed paraffin embedded tissue but has not been tested for use on formalin fixed tissue. (4)
Reactivity:	Human, Mouse, Rabbit
Host:	Rat
Isotype:	IgG2b
Clonality:	Monoclonal
Immunogen:	T cell enriched splenocytes from B10 mice. Spleen cells from immunised DA Rats were fused with cells of the NS1/1.Ag4.1 mouse myeloma cell line.
Specificity:	This antibody recognises the Murine CD11b cell surface antigen (also known as the alpha M integrin chain or MAC-1). Clone M1/70.15 has been reported to block iC3b binding to its receptor. SM014A is recommended for this purpose.
Formulation:	PBS State: Purified State: Liquid purified IgG fraction from tissue culture supernatant Preservative: 0.09% Sodium Azide
Concentration:	lot specific
Purification:	Affinity Chromatography on Protein G



[View online »](#)

Conjugation:	Unconjugated
Storage:	Store undiluted at 2-8°C for one month or (in aliquots) at -20°C for longer. Avoid repeated freezing and thawing.
Stability:	Shelf life: one year from despatch.
Database Link:	P05555
Background:	MAC-1 is a differentiation antigen expressed by granulocytes, monocytes, NK cells and tissue macrophages. The expression of CD11b increases during monocyte maturation and expression levels vary on tissue macrophages. Peritoneal macrophages are reported to express higher levels of CD11b than splenic macrophages.
Synonyms:	ITGAM, CR3A, CR-3 alpha chain, Integrin alpha-M, MAC1

Product images:

Staining of Mouse peritoneal Macrophages with Rat anti Mouse CD11b Antibody