

Product datasheet for **SM011R**

Cd8a Rat Monoclonal Antibody [Clone ID: KT15]

Product data:

Product Type:	Primary Antibodies
Clone Name:	KT15
Applications:	FC
Recommended Dilution:	Flow Cytometry: Use 10 µl of Neat-1/10 diluted antibody to label 10e6 cells in 100µl. The Fc region of monoclonal antibodies may bind non-specifically to cells expressing low affinity Fc receptors.
Reactivity:	Mouse
Host:	Rat
Isotype:	IgG2a
Clonality:	Monoclonal
Immunogen:	T cell clone, C6. Spleen cells from a Sprague Dawley rat immunised with the C6 T cell clone were fused with cells of the NSO mouse myeloma cell line.
Specificity:	This antibody reacts to Ly2.1 and Ly2.2 cells. Reacts with the CD8 alpha chain (non polymorphic). Weakly cytotoxic.
Formulation:	PBS containing 0.09% Sodium Azide as preservative and 1% BSA as stabilizer. Label: PE State: Lyophilized purified IgG fraction. Label: R. Phycoerythrin (RPE)
Reconstitution Method:	Restore with distilled water: SM011R with 1.0 ml SM011RT with 0.25 ml SM011RX with 5.0 ml
Conjugation:	PE
Storage:	Prior to and following reconstitution store the antibody undiluted at 2-8°C. DO NOT FREEZE! This product is photosensitive and should be protected from light.
Stability:	Shelf life: one year from despatch.



[View online »](#)

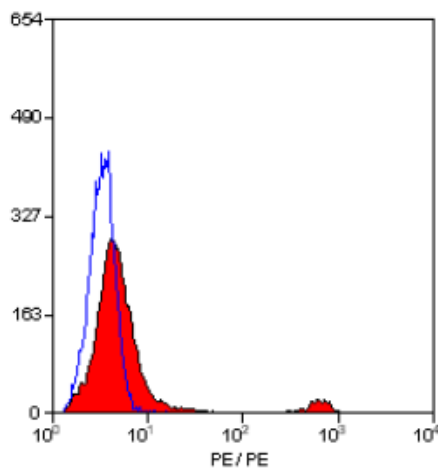
Gene Name: CD8 antigen, alpha chain

Database Link: [Entrez Gene 12525 Mouse P01731](#)

Background: The CD8 antigen is a cell surface glycoprotein found on most cytotoxic T lymphocytes that mediates efficient cell to cell interactions within the immune system. The CD8 antigen, acting as a coreceptor, and the T cell receptor on the T lymphocyte recognize antigen displayed by an antigen presenting cell (APC) in the context of class I MHC molecules. The functional coreceptor is either a homodimer composed of two alpha chains, or a heterodimer composed of one alpha and one beta chain. Both alpha and beta chains share significant homology to immunoglobulin variable light chains.

Synonyms: CD8 alpha chain, CD8A, MAL

Product images:



Staining of Mouse spleen cells with Rat Anti Mouse CD8 ALPHA-RPE