

## Product datasheet for **SM011PS**

### Cd8a Rat Monoclonal Antibody [Clone ID: KT15]

#### Product data:

Product Type:	Primary Antibodies
Clone Name:	KT15
Applications:	FC, IF, IHC
Recommended Dilution:	<b>Immunofluorescence.</b> <b>Flow Cytometry:</b> Use 10 µl of 1/100-1/200 diluted antibody to label 10e6 cells in 100 µl. <b>Immunohistochemistry on Frozen Sections.</b>
Reactivity:	Mouse
Host:	Rat
Isotype:	IgG2a
Clonality:	Monoclonal
Immunogen:	T cell clone, C6.
Specificity:	This antibody recognizes Ly2.1 and Ly2.2 cells; reacting with the CD8 alpha chain (non polymorphic). It is weakly cytotoxic.
Formulation:	PBS, pH 7.4 containing 0.09% Sodium Azide as preservative. State: Purified State: Liquid purified IgG fraction
Concentration:	lot specific
Purification:	Affinity Chromatography on Protein A
Conjugation:	Unconjugated
Storage:	Store the antibody undiluted at 2-8°C for one month or (in aliquots) at -20°C for longer. Avoid repeated freezing and thawing.
Stability:	Shelf life: one year from despatch.
Gene Name:	CD8 antigen, alpha chain
Database Link:	<a href="#">Entrez Gene 12525 Mouse P01731</a>



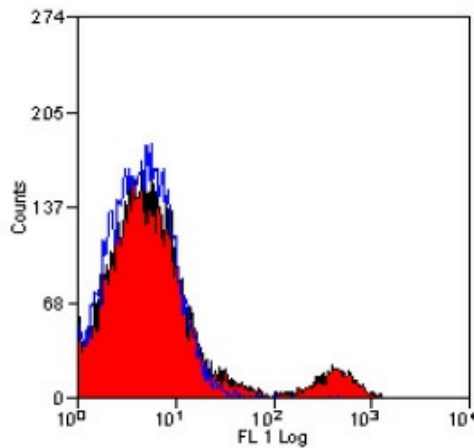
[View online »](#)

**Background:**

The CD8 antigen is a cell surface glycoprotein found on most cytotoxic T lymphocytes that mediates efficient cell to cell interactions within the immune system. The CD8 antigen, acting as a coreceptor, and the T cell receptor on the T lymphocyte recognize antigen displayed by an antigen presenting cell (APC) in the context of class I MHC molecules. The functional coreceptor is either a homodimer composed of two alpha chains, or a heterodimer composed of one alpha and one beta chain. Both alpha and beta chains share significant homology to immunoglobulin variable light chains.

**Synonyms:**

CD8 alpha chain, CD8A, MAL

**Product images:**

Staining of Mouse spleen cells with Rat anti Mouse CD8 antibody.