

Product datasheet for **SM011F**

Cd8a Rat Monoclonal Antibody [Clone ID: KT15]

Product data:

Product Type:	Primary Antibodies
Clone Name:	KT15
Applications:	FC
Recommended Dilution:	Flow cytometry: Neat - 1/10; Use 10µl of the suggested working dilution to label 10e6 cells in 100µl; The Fc region of monoclonal antibodies may bind non-specifically to cells expressing low affinity Fc receptors.
Reactivity:	Mouse
Host:	Rat
Isotype:	IgG2a
Clonality:	Monoclonal
Immunogen:	T cell clone, C6. Spleen cells from immunised SD rats were fused with cells of the NSO mouse myeloma cell line.
Specificity:	This antibody reacts with a non-polymorphic epitope on the CD8 alpha chain. Stains mouse Ly2.1 and Ly2.2 cells.
Formulation:	PBS, pH7.4 containing 0.09% Sodium Azide and 1% Bovine Serum Albumin Label: FITC State: Liquid purified IgG Label: Fluorescein Isothiocyanate Isomer 1
Concentration:	lot specific
Purification:	Affinity chromatography on Protein A
Conjugation:	FITC
Storage:	Store the antibody undiluted at 2-8°C for one month or (in aliquots) at -20°C for longer. Avoid repeated freezing and thawing. This product is photosensitive and should be protected from light.
Stability:	Shelf life: one year from despatch.
Gene Name:	CD8 antigen, alpha chain
Database Link:	Entrez Gene 12525 Mouse P01731



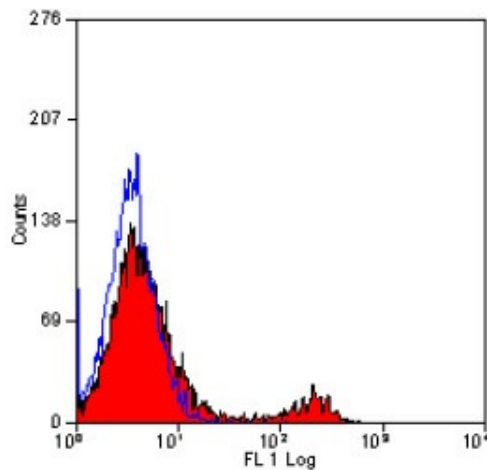
[View online »](#)

Background:

The CD8 antigen is a cell surface glycoprotein found on most cytotoxic T lymphocytes that mediates efficient cell to cell interactions within the immune system. The CD8 antigen, acting as a coreceptor, and the T cell receptor on the T lymphocyte recognize antigen displayed by an antigen presenting cell (APC) in the context of class I MHC molecules. The functional coreceptor is either a homodimer composed of two alpha chains, or a heterodimer composed of one alpha and one beta chain. Both alpha and beta chains share significant homology to immunoglobulin variable light chains.

Synonyms:

CD8 alpha chain, CD8A, MAL

Product images:

Staining of mouse spleen with RAT ANTI MOUSE
CD8 ALPHA: FITC