

Product datasheet for **SM008R**

Cd40 Rat Monoclonal Antibody [Clone ID: 3/23]

Product data:

Product Type:	Primary Antibodies
Clone Name:	3/23
Applications:	FC
Recommended Dilution:	Flow Cytometry: Use 10 µl of diluted antibody to label 10e6 cells in 100 µl. The Fc region of monoclonal antibodies may bind non-specifically to cells expressing low affinity fc receptors.
Reactivity:	Mouse
Host:	Rat
Isotype:	IgG2a
Clonality:	Monoclonal
Immunogen:	Extracellular Domain of Mouse CD40 and the Fc portion of Human IgG1. Spleen cells from immunised LOU/c rats were fused with cells of the Ag8 mouse myeloma cell line.
Specificity:	This antibody recognises CD40 and stains most mature mouse B cells. T cells are unlabelled.
Formulation:	PBS, pH 7.4 containing 0.09% Sodium Azide as preservative and 1% BSA as stabilizer. Label: PE State: Lyophilized purified IgG fraction. Label: R. Phycoerythrin (RPE)
Reconstitution Method:	Restore with distilled water: SM008R with 1.0 ml. SM008RT with 0.25 ml SM008RX with 5.0 ml
Concentration:	lot specific
Purification:	Affinity Chromatography on Protein G.
Conjugation:	PE
Storage:	Prior to and following reconstitution store the antibody undiluted at 2-8°C. DO NOT FREEZE! This product is photosensitive and should be protected from light.
Stability:	Shelf life: one year from despatch.



[View online »](#)

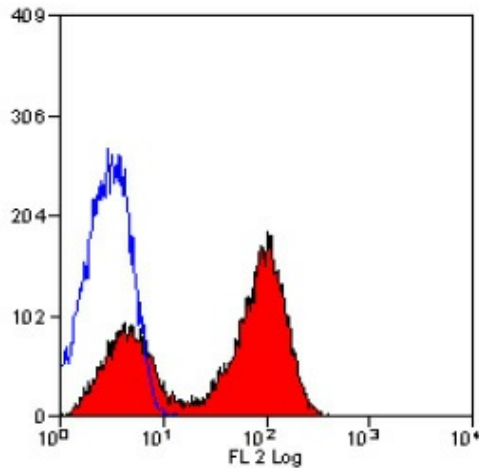
Gene Name: CD40 antigen

Database Link: [Entrez Gene 21939 Mouse P27512](#)

Background: CD40 is a costimulatory molecule of the TNF receptor superfamily and is expressed on many cell types, such as B cells, monocytes/macrophages, dendritic cells, endothelial cells, fibroblasts or vascular smooth muscle cells. Interaction of CD40 and its ligand CD154 (CD40L) is required for the generation of antibody responses to T-dependent antigens as well as for the development of germinal centers and memory B cells. In monocytes/macrophages CD40 engagement induces production of pro-inflammatory cytokines and chemokines. CD40-CD154 interactions are also critical for development of CD4 T cell-dependent effector functions. CD40 links innate and adaptive immune responses to bacterial stimuli and serves as an important regulator affecting functions of other costimulatory molecules.

Synonyms: TNFRSF5, CDw40, Bp50

Product images:



Staining of Mouse spleen with Rat Anti Mouse CD40-RPE.