

## Product datasheet for **SM008LE**

### Cd40 Rat Monoclonal Antibody [Clone ID: 3/23]

#### Product data:

Product Type:	Primary Antibodies
Clone Name:	3/23
Applications:	ELISA, FC, FN, IHC
Recommended Dilution:	Flow Cytometry: Use 10 µl of 1/50 diluted antibody to label 10e6 cells in 100 µl. Immunohistochemistry on Frozen Sections. ELISA. Functional Assays.
Reactivity:	Mouse
Host:	Rat
Isotype:	IgG2a
Clonality:	Monoclonal
Immunogen:	Extracellular domain of Mouse CD40 and the Fc portion of Human IgG1. Spleen cells from immunised LOU/c rats were fused with cells of the Ag8 mouse myeloma cell line.
Specificity:	Specificity was checked by ELISA and flow cytometry using BHK cells transfected with mouse CD40. It does not react with normal mouse Ig or with human IgG1 and will stain most mature mouse B cells. It does not cross react with mouse T cells. Clone 3/23 is a powerful activator of normal B cells especially in the presence of IL-4.
Formulation:	PBS, pH 7.4 without preservatives. State: Low Endotoxin State: Liquid purified IgG fraction.
Concentration:	lot specific
Purification:	Affinity Chromatography on Protein G.
Conjugation:	Unconjugated
Storage:	Store the antibody at -20°C only. Avoid repeated freezing and thawing.
Stability:	Shelf life: one year from despatch.
Gene Name:	CD40 antigen



[View online »](#)

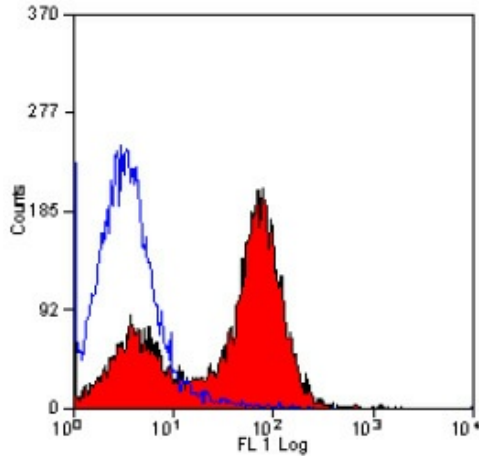
Database Link: [Entrez Gene 21939 Mouse P27512](#)

**Background:** CD40 is a costimulatory molecule of the TNF receptor superfamily and is expressed on many cell types, such as B cells, monocytes/macrophages, dendritic cells, endothelial cells, fibroblasts or vascular smooth muscle cells. Interaction of CD40 and its ligand CD154 (CD40L) is required for the generation of antibody responses to T-dependent antigens as well as for the development of germinal centers and memory B cells. In monocytes/macrophages CD40 engagement induces production of pro-inflammatory cytokines and chemokines. CD40-CD154 interactions are also critical for development of CD4 T cell-dependent effector functions. CD40 links innate and adaptive immune responses to bacterial stimuli and serves as an important regulator affecting functions of other costimulatory molecules.

**Synonyms:** TNFRSF5, CDw40, Bp50

**Note:** **Endotoxin Level:** less than 0.01 EU/ $\mu$ g

### Product images:



Staining of mouse spleen with Rat Anti Mouse CD40-LOW ENDOTOXIN