

## Product datasheet for **SC335583**

### **NDRG2 (NM\_001282213) Human Untagged Clone**

#### Product data:

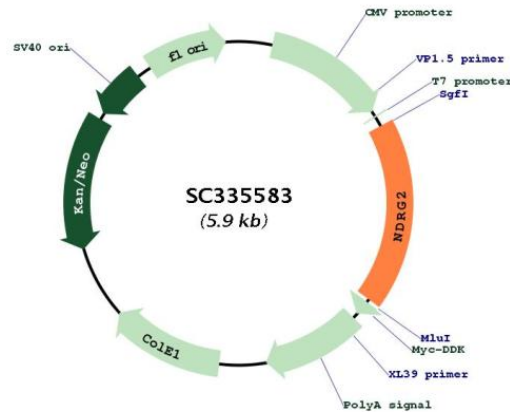
**Product Type:** Expression Plasmids  
**Product Name:** NDRG2 (NM\_001282213) Human Untagged Clone  
**Tag:** Tag Free  
**Symbol:** NDRG2  
**Synonyms:** SYLD  
**Vector:** pCMV6-Entry (PS100001)  
**Fully Sequenced ORF:** >SC335583 representing NM\_001282213.  
Blue=Insert sequence Red=Cloning site Green=Tag(s)

```
ATGGCGGAGCTGCAGGAGGTGCAGATCACAGAGGAGAAGCCACTGTTGCCAGGACAGACGCCTGAGGCG  
GCCAAGACTCACTCTGTGGAGACACCATACGGCTCTGTCACTTTCCTGTCTATGGCACCCCAAACCC  
AAACGCCAGCGATCCTTACCTACCACGATGTGGGACTCAACTATAAATCTTGCTCCAGCCACTGTTT  
CAGTTCGAGGACATGCAGGAAATCATTCAAACTTTGTGCGGGTTCATGTGGATGCCCTGGAATGGAA  
GAGGGAGCCCTGTGTTCCCTTTGGGATATCAGTACCCATCTCTGGACCAGCTTGCAGACATGATCCCT  
TGCCTCTGCAGTACCTAAATTTCTCTACAATAATTGGAGTTGGTGTGGAGCTGGAGCCTACATCCTG  
GCGAGATATGCTCTTAACCACCCGGACACTGTTGAAGGCTTGTCTCATCAACATTGATCCCAATGCC  
AAGGGTTGGATGGATTGGGCAGCCACAAGCTAACAGGCCTCACCTCTCCATTCCGGAGATGATCCTT  
GGACATCTTTTCAGCCAGGAAGAGCTCTCTGAAATTCTGAGTTGATACAAAAGTACAGAAATATCATT  
ACACATGCACCCAACCTGGATAACATTGAATTGTACTGGAACAGCTACAACAACCGCCGAGACCTGAAC  
TTTGAGCGTGGAGGTGATATCACCTCAGGTGCCTGTGATGCTGGTGGTAGGAGACCAAGCACCTCAT  
GAAGATGCAGTGGTGAATGTAACCTAAACTGGACCCCAACCCAGACCTCGTTCCTCAAGATGGCTGAC  
TCCGGAGGTGAGCCAGCTGACTCAGCCAGGCAAGCTGACCGAGGCCTCAAGTACTTCTGCAAGGC  
ATGGGCTACATGGCCTCATCCTGCATGACTCGCCTGTCCCGTCTCGTACAGCCTCTGACCCAGTGCA  
GCATCCGTTGATGGCAACCGGTCCGCTCTCGCACCCCTGTCCAGAGCAGCGAGTCTGAACTCTTTCT  
TCGGGGCCCCGGGGCACACCATGGAGGTCTCCTGTGA
```

**Restriction Sites:** SgfI-MluI



[View online »](#)

**Plasmid Map:**


**ACCN:** NM\_001282213

**Insert Size:** 1074 bp

**OTI Disclaimer:** Our molecular clone sequence data has been matched to the reference identifier above as a point of reference. Note that the complete sequence of our molecular clones may differ from the sequence published for this corresponding reference, e.g., by representing an alternative RNA splicing form or single nucleotide polymorphism (SNP).

**Components:** The ORF clone is ion-exchange column purified and shipped in a 2D barcoded Matrix tube containing 10ug of transfection-ready, dried plasmid DNA (reconstitute with 100 ul of water).

**Reconstitution Method:**

1. Centrifuge at 5,000xg for 5min.
2. Carefully open the tube and add 100ul of sterile water to dissolve the DNA.
3. Close the tube and incubate for 10 minutes at room temperature.
4. Briefly vortex the tube and then do a quick spin (less than 5000xg) to concentrate the liquid at the bottom.
5. Store the suspended plasmid at -20°C. The DNA is stable for at least one year from date of shipping when stored at -20°C.

**RefSeq:** [NM\\_001282213.1](#)

**RefSeq Size:** 2257 bp

RefSeq ORF: 1074 bp

Locus ID: 57447

UniProt ID: [Q9UN36](#)

Cytogenetics: 14q11.2

MW: 39.3 kDa

**Gene Summary:** This gene is a member of the N-myc downregulated gene family which belongs to the alpha/beta hydrolase superfamily. The protein encoded by this gene is a cytoplasmic protein that may play a role in neurite outgrowth. This gene may be involved in glioblastoma carcinogenesis. Alternative splicing results in multiple transcript variants. [provided by RefSeq, Aug 2017]

Transcript Variant: This variant (11) differs in the 5' UTR and lacks an alternate in-frame internal exon compared to variant 1. The resulting isoform (b) lacks an alternate internal segment compared to isoform a. Variants 2, 3, 5, 8, 11, and 12 all encode the same isoform (b).