

Product datasheet for **SC335320**

CRELD2 (NM_001284318) Human Untagged Clone

Product data:

Product Type:	Expression Plasmids
Product Name:	CRELD2 (NM_001284318) Human Untagged Clone
Tag:	Tag Free
Symbol:	CRELD2
Mammalian Cell Selection:	Neomycin
Vector:	pCMV6-Entry (PS100001)
E. coli Selection:	Kanamycin (25 ug/mL)
Fully Sequenced ORF:	>SC335320 representing NM_001284318. Blue=Insert sequence Red=Cloning site Green=Tag(s)

```
GCTCGTTTAGTGAACCGTCAGAATTTTGTAAACGACTACTATAGGGCCGCGGAATTCGTCGACTG
GATCCGGTACCGAGGAGATCTGCCGCCGCGATCGCC
ATGCGCCTGCCGCGCCGGGCGCGCTGGGGCTCCTGCCGTTCTGCTGCTGCTGCCGCCCGCGCCGGAG
GCCGCAAGAAGCCGACGCCCTGCCACCGGTGCCGGGGCTGGTGGACAAGTTAAACCAGGGGATGGTG
GACACCGCAAAGAAGAACTTTGGCGCGGGAACACGGCTTGGGAGGAAAAGACGCTGTCCAAGTACGAG
TCCAGCGAGATTCGCCTGCTGGAGATCCTGGAGGGCTGTGCGAGAGCAGCGACTTGAATGCAATCAG
ATGCTAGAGGCGCAGGAGGAGCACCTGGAGGCCCTGGTGGCTGCAGCTGAAGAGCGAATATCCTGACTTA
TTCGAGTGGTTTTGTGTGAAGACTGAAAGTGTGCTCCTCCAGGAACCTACGGTCCCAGTGTCTC
GCATGCCAGGGCGGATCCAGAGGCCCTGCAGCGGAATGGCCACTGCAGCGGAGATGGGAGCAGACAG
GGCGACGGGTCTGCCGGTGCCACATGGGGTACCAGGGCCCGCTGTGCACTGACTGCATGGACGGCTAC
TTCAGCTCGTCCGGAACGAGACCCACAGCATCTGCACAGCCTGTGACGAGTCTGCAAGACGTGCTCG
GGCCTGACCAACAGAGACTGCGGCGAGTGTGAAGTGGGCTGGGTGCTGGACGAGGGCGCCTGTGTGGAT
GTGGACGAGTGTGCGGCCGAGCCGCTCCCTGCAGCGCTGCGCAGTTCTGTAAGAACGCCAACGGCTCC
TACACGTGCGAAGATGTGGACGAGTGTACTAGCAGAAAAACCTGTGTGAGGAAAAACGAAAACCTGC
TACAATACTCCAGGGAGTACGCTGTGTGTGCTGACGGCTTCAAGAAACGGAAGATGCCTGTGTG
CCGCCGCGAGAGGCTGAAGCCACAGAAGGAGAAAGCCCGACACAGCTGCCCTCCCGGAAGACCTGTAA
```

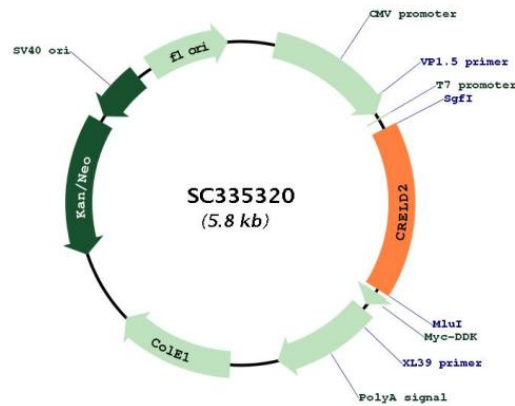
```
ACGCGTACGCGGCCGCTCGAGCAGAAACTCATCTCAGAAGAGGATCTGGCAGCAAATGATATCCTGGAT
TACAAGGATGACGACGATAAGGTTAAACGGCCGGC
```

Restriction Sites: SgfI-MluI



[View online »](#)

Plasmid Map:



ACCN: NM_001284318

Insert Size: 966 bp

OTI Disclaimer: Our molecular clone sequence data has been matched to the reference identifier above as a point of reference. Note that the complete sequence of our molecular clones may differ from the sequence published for this corresponding reference, e.g., by representing an alternative RNA splicing form or single nucleotide polymorphism (SNP).

Components: The ORF clone is ion-exchange column purified and shipped in a 2D barcoded Matrix tube containing 10ug of transfection-ready, dried plasmid DNA (reconstitute with 100 ul of water).

Reconstitution Method:

1. Centrifuge at 5,000xg for 5min.
2. Carefully open the tube and add 100ul of sterile water to dissolve the DNA.
3. Close the tube and incubate for 10 minutes at room temperature.
4. Briefly vortex the tube and then do a quick spin (less than 5000xg) to concentrate the liquid at the bottom.
5. Store the suspended plasmid at -20°C. The DNA is stable for at least one year from date of shipping when stored at -20°C.

RefSeq: [NM_001284318.1](#)

RefSeq Size: 1353 bp

RefSeq ORF: 966 bp

Locus ID: 79174

UniProt ID: [Q6UXH1](#)

Cytogenetics:	22q13.33
Protein Families:	Druggable Genome, Secreted Protein
MW:	35 kDa
Gene Summary:	<p>May regulate transport of alpha4-beta2 neuronal acetylcholine receptor.[UniProtKB/Swiss-Prot Function]</p> <p>Transcript Variant: This variant (2) lacks an alternate in-frame exon in both the central and 3' coding regions, compared to variant 1, resulting in an isoform (d, also known as CRELD2-alpha) that is shorter than isoform a.</p>