

Product datasheet for **SC335268**

CRISPLD1 (NM_001286778) Human Untagged Clone

Product data:

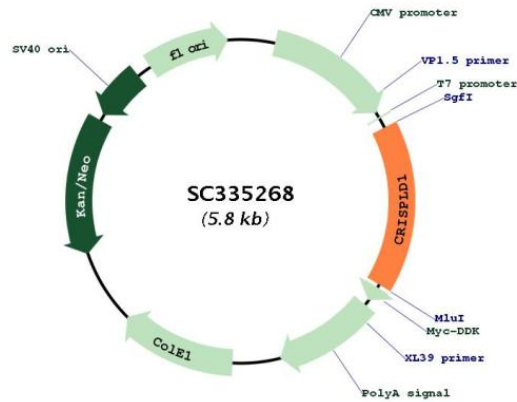
Product Type:	Expression Plasmids
Product Name:	CRISPLD1 (NM_001286778) Human Untagged Clone
Tag:	Tag Free
Symbol:	CRISPLD1
Synonyms:	CRISP-10; CRISP10; LCRISP1
Mammalian Cell Selection:	Neomycin
Vector:	pCMV6-Entry (PS100001)
E. coli Selection:	Kanamycin (25 ug/mL)
Fully Sequenced ORF:	>SC335268 representing NM_001286778. Blue=Insert sequence Red=Cloning site Green=Tag(s)

```
GCTCGTTT TAGTGAACCGTCAGAATTTTGT AATACGACTCACTATAGGGCGGCCGGGAATTCGTCGACTG
GATCCGGTACCGAGGAGATCTGCCGCC CGCATCGCC
ATGAACATCTGGGGCAGATATGGCCAAAGCTGTCTACCTGGTGTGCAATTACTCCCCAAAGGGAAAC
TGGTGGGGCCATGCCCTTACAAACATGGGCGGCCCTGTTCTGCTTGCCACCTAGTTTTGGAGGGGC
TGTAGAGAAAATCTGTGCTACAAAGAAGGGTCAGACAGGTATTATCCCCCTCGAGAAGAGGAAACAAAT
GAAATAGAACGACAGCAGTCACAAGTCCATGACACCCATGTCGGACAAGATCAGATGATAGTAGCAGA
AATGAAGTCATAAGCGCACAGCAAATGTCCAAATTGTTTCTTGTGAAGTAAGATTAAGAGATCAGTGC
AAAGGAACAACCTGCAATAGGTACGAATGTCCTGCTGGCTGTTTGGATAGTAAAGCTAAAGTTATTGGC
AGTGTACATTATGAAATGCAATCCAGCATCTGTAGAGCTGCAATTCATTATGGTATAATAGACAATGAT
GGTGGCTGGGTAGATATCACTAGACAAGGAAGAAAGCATTATTTTCATCAAGTCCAATAGAAATGGTATT
CAAACAATTGGCAAATATCAGTCTGCTAATTCCTTACAGTCTCTAAAGTAACAGTTCAGGCTGTGACT
TGTGAAACAACCTGTGGAACAGCTCTGTCCATTTATAAGCCTGCTTACATTGCCAAGAGTATACTGT
CCTCGTAACTGTATGCAAGCAAATCCACATTATGCTCGTGAATTGGAACCGAGTTTATTCTGATCTG
TCCAGTATCTGCAGAGCAGCAGTACATGCTGGAGTGGTTCGAAATCACGGTGGTTATGTTGATGTAATG
CCTGTGGACAAAAGAAAGACCTACATTGCTTCTTTTCAGAAATGGAATCTTCTCAGAAAGTTTACAGAA
CCTCCAGGAGGAAAGGCATTTCAGAGTGTGCTGTTGTG TGA
ACGCGTACGCGGCCGCTCGAGCAGAAACTCATCTCAGAAGAGGATCTGGCAGCAAATGATATCCTGGAT
TACAAGGATGACGACGATAAGGTTTAAACGGCCGGC
```

Restriction Sites: SgfI-MluI



[View online »](#)

Plasmid Map:


ACCN: NM_001286778

Insert Size: 939 bp

OTI Disclaimer: Our molecular clone sequence data has been matched to the reference identifier above as a point of reference. Note that the complete sequence of our molecular clones may differ from the sequence published for this corresponding reference, e.g., by representing an alternative RNA splicing form or single nucleotide polymorphism (SNP).

Components: The ORF clone is ion-exchange column purified and shipped in a 2D barcoded Matrix tube containing 10ug of transfection-ready, dried plasmid DNA (reconstitute with 100 ul of water).

Reconstitution Method:

1. Centrifuge at 5,000xg for 5min.
2. Carefully open the tube and add 100ul of sterile water to dissolve the DNA.
3. Close the tube and incubate for 10 minutes at room temperature.
4. Briefly vortex the tube and then do a quick spin (less than 5000xg) to concentrate the liquid at the bottom.
5. Store the suspended plasmid at -20°C. The DNA is stable for at least one year from date of shipping when stored at -20°C.

RefSeq: [NM_001286778.1](#)

RefSeq Size: 3817 bp

RefSeq ORF: 939 bp

Locus ID: 83690

Cytogenetics: 8q21.13

Protein Families: Secreted Protein

MW: 35.1 kDa