

Product datasheet for SC335264

NDRG2 (NM_001282216) Human Untagged Clone

Product data:

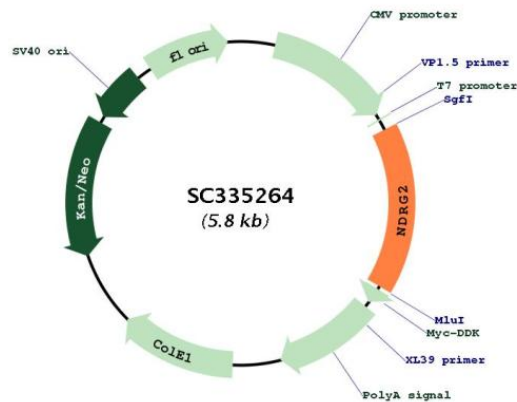
Product Type:	Expression Plasmids
Product Name:	NDRG2 (NM_001282216) Human Untagged Clone
Tag:	Tag Free
Symbol:	NDRG2
Synonyms:	SYLD
Mammalian Cell Selection:	Neomycin
Vector:	pCMV6-Entry (PS100001)
E. coli Selection:	Kanamycin (25 ug/mL)
Fully Sequenced ORF:	>SC335264 representing NM_001282216. Blue=Insert sequence Red=Cloning site Green=Tag(s)

```
GCTCGTTTGTAGTGAACCGTCAGAATTTGTAAACGACTACTATAGGGCGCCGGGAATTCGTCGACTG
GATCCGGTACCGAGGAGATCTGCCGCCGCGATCGCC
ATGGCACCCCAACCCAAACGCCAGCGATCCTTACCTACCACGATGTGGGACTCAACTCCACTGTTT
CAGTTCGAGGACATGCAGGAAATCATTAGAACTTTGTGCGGGTTCATGTGGATGCCCTGGAATGGAA
GAGGGAGCCCTGTGTTCCCTTTGGGATATCAGTACCCATCTCTGGACCAGCTTGACAGACATGATCCCT
TGCGTCTGCAGTACCTAAATTTCTCTACAATAATTGGAGTTGGTGTGGAGCTGGAGCCTACATCCTG
GCGAGATATGCTCTTAACCACCCGGACACTGTTGAAGTCTTGCCTCATCAACATTGATCCCAATGCC
AAGGGTTGGATGGATTGGGCAGCCACAAGCTAACAGGCCTCACCTCTTCCATTCCGGAGATGATCCTT
GGACATCTTTTACGCCAGGAAGAGCTCTCTGAAATTCTGAGTTGATACAAAAGTACAGAAATATCATT
ACACATGCACCCAACCTGGATAACATTGAATTGTACTGGAACAGCTACAACAACCCGAGACCTGAAC
TTTGAGCGTGGAGGTGATATCACCTCAGGTGTCTGTGATGCTGGTGGTGGAGACCAAGCACCTCAT
GAAGATGCAGTGGTGGAAATGTAACCTCAAACCTGGACCCACCCAGACCTCGTTCCCAAGATGGCTGAC
TCCGGAGGTGAGCCAGCTGACTCAGCCAGGCAAGCTGACCGAGGCCTCAAGTACTTCTGCAAGGC
ATGGGCTACATGGCCTCATCCTGCATGACTCGCCTGTCCCGTCTCGTACAGCCTCTCTGACCAGTGCA
GCATCCGTTGATGGCAACCGTCCCGCTCTCGCACCTGTCCAGAGCAGCGAGTCTGAACTCTTTCT
TCGGGGCCCCGGGGCACACCATGGAGGTCTCCTGTGA
ACGCGTACGCGGCGCTCGAGCAGAACTCATCTCAGAAGAGGATCTGGCAGCAAATGATATCCTGGAT
TACAAGGATGACGACGATAAGGTTTAAACGCCCGGC
```

Restriction Sites: SgfI-MluI



[View online »](#)

Plasmid Map:


ACCN: NM_001282216

Insert Size: 936 bp

OTI Disclaimer: Our molecular clone sequence data has been matched to the reference identifier above as a point of reference. Note that the complete sequence of our molecular clones may differ from the sequence published for this corresponding reference, e.g., by representing an alternative RNA splicing form or single nucleotide polymorphism (SNP).

Components: The ORF clone is ion-exchange column purified and shipped in a 2D barcoded Matrix tube containing 10ug of transfection-ready, dried plasmid DNA (reconstitute with 100 ul of water).

Reconstitution Method:

1. Centrifuge at 5,000xg for 5min.
2. Carefully open the tube and add 100ul of sterile water to dissolve the DNA.
3. Close the tube and incubate for 10 minutes at room temperature.
4. Briefly vortex the tube and then do a quick spin (less than 5000xg) to concentrate the liquid at the bottom.
5. Store the suspended plasmid at -20°C. The DNA is stable for at least one year from date of shipping when stored at -20°C.

RefSeq: [NM_001282216.1](#)

RefSeq Size: 1993 bp

RefSeq ORF: 936 bp

Locus ID: 57447

UniProt ID: [Q9UN36](#)

Cytogenetics: 14q11.2

MW: 34.2 kDa

Gene Summary: This gene is a member of the N-myc downregulated gene family which belongs to the alpha/beta hydrolase superfamily. The protein encoded by this gene is a cytoplasmic protein that may play a role in neurite outgrowth. This gene may be involved in glioblastoma carcinogenesis. Alternative splicing results in multiple transcript variants. [provided by RefSeq, Aug 2017]

Transcript Variant: This variant (14) differs in the 5' UTR and uses an alternate splice junction at the 5' end of a coding exon, and initiates translation from a downstream AUG, compared to variant 1. The resulting isoform (f) has a shorter and distinct N-terminus compared to isoform a.