

Product datasheet for SC335256

WIPI2 (NM_001278299) Human Untagged Clone

Product data:

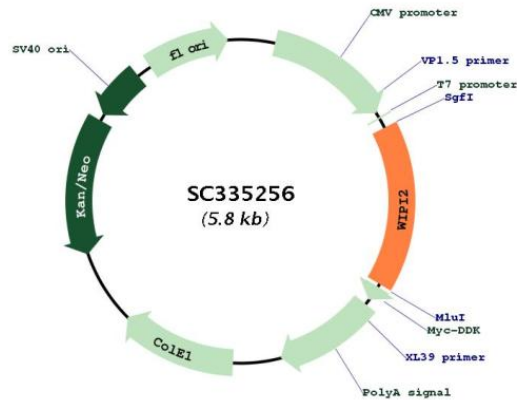
| | |
|---------------------------|--|
| Product Type: | Expression Plasmids |
| Product Name: | WIPI2 (NM_001278299) Human Untagged Clone |
| Tag: | Tag Free |
| Symbol: | WIPI2 |
| Synonyms: | ATG18B; Atg21; CGI-50; IDDSSA; WIPI-2 |
| Mammalian Cell Selection: | Neomycin |
| Vector: | pCMV6-Entry (PS100001) |
| E. coli Selection: | Kanamycin (25 ug/mL) |
| Fully Sequenced ORF: | >SC335256 representing NM_001278299. Blue=Insert sequence Red=Cloning site Green=Tag(s) |

```
GCTCGTTT TAGTGAACCGTCAGAATTTTGT AATACGACTCACTATAGGGCGCCGGGAATTCGTCGACTG
GATCCGGTACCGAGGAGATCTGCCGCC CGCATCGCC
ATGAAGGTGCTGCATACGATCAGGGAGACGCCTCCAAACCCTGCAGGCCTGTGTGCGCTGTCAATCAAC
AACGACAACCTGCTACTTGGCGTACCCAGGGAGCGCACCATCGGAGAGGTGCAGGTCTTCGATACCATT
AATTTGAGAGCTGCAAACATGATTCCGGCTCACGACAGTCCTTTAGCGGCACTGGCCTTTGACGCAAGT
GGAACATAACTTGCCACGGCTTCGGAGAAGGGGACCGTGATTAGGGTATTTCCATTCCAGAAGGACAA
AAACTCTTTGAGTTTCGGAGAGGAGTAAGAGGTGCGTGAGCATCTGCTCCCTGGCCTTCAGCATGGAC
GGCATGTTCTCTCCGCCTCCAGCAACTGAGACCGTGACATCTTCAAACCTCGAGACTGTGAAAGAA
AAACCCCGAGAGGAGCCACCACCTGGACCGGGTACTTCGGGAAAAGTGCTCATGGCCTCCACCAGCTAC
CTGCCTTCCCAAGTGACAGAAATGTTCAACCAGGGCAGAGCCTTCGCCACGGTCCGCCTGCCATTCTGC
GGCCACAAAAACATCTGCTCGCTAGCCACAATTCAGAAGATCCCGCGGTTGTTGGTGCCGCCGAC
GGGTACCTGTACATGTACAACCTGGACCCCGAGGGCGCGGAGTGTCCTGATGAAGCAGCACCCGG
CTGGACGGCAGTCTGAAACGACCAATGAGATCTTGACTCTGCCTCTCACGACTGCCCTTAGTCACT
CAGACATACGGCGCAGCTGCAGGAAAAGTACTTACGTGCCTTCATCCCCAACGAGACTTGCCACACA
GACGACCTGGGTGCTGTGGGTGGCGCTGCCTGGAGGACGAGGCCAGCGCCCTGCCCTGGATGAGGAC
AGCGAGCACCCGCCATGATTCTTCGGACTGAC TGA
ACGCGTACGCGGCCGCTCGAGCAGAACTCATCTCAGAAGAGGATCTGGCAGCAAATGATATCCTGGAT
TACAAGGATGACGACGATAAGGTTTAAACGGCCGGC
```

Restriction Sites: SgfI-MluI



[View online »](#)

Plasmid Map:


ACCN: NM_001278299

Insert Size: 933 bp

OTI Disclaimer: Our molecular clone sequence data has been matched to the reference identifier above as a point of reference. Note that the complete sequence of our molecular clones may differ from the sequence published for this corresponding reference, e.g., by representing an alternative RNA splicing form or single nucleotide polymorphism (SNP).

Components: The ORF clone is ion-exchange column purified and shipped in a 2D barcoded Matrix tube containing 10ug of transfection-ready, dried plasmid DNA (reconstitute with 100 ul of water).

Reconstitution Method:

1. Centrifuge at 5,000xg for 5min.
2. Carefully open the tube and add 100ul of sterile water to dissolve the DNA.
3. Close the tube and incubate for 10 minutes at room temperature.
4. Briefly vortex the tube and then do a quick spin (less than 5000xg) to concentrate the liquid at the bottom.
5. Store the suspended plasmid at -20°C. The DNA is stable for at least one year from date of shipping when stored at -20°C.

RefSeq: [NM_001278299.1](#)

RefSeq Size: 4663 bp

RefSeq ORF: 933 bp

Locus ID: 26100

UniProt ID: [Q9Y4P8](#)

Cytogenetics: 7p22.1

MW: 33.5 kDa

Gene Summary: WD40 repeat proteins are key components of many essential biologic functions. They regulate the assembly of multiprotein complexes by presenting a beta-propeller platform for simultaneous and reversible protein-protein interactions. Members of the WIPI subfamily of WD40 repeat proteins, such as WIPI2, have a 7-bladed propeller structure and contain a conserved motif for interaction with phospholipids (Proikas-Cezanne et al., 2004 [PubMed 15602573]).[supplied by OMIM, Mar 2008]

Transcript Variant: This variant (6) uses an alternate splice junction in a 5' exon compared to variant 1. This difference causes translation initiation at a downstream AUG and results in an isoform (f) with a shorter N-terminus, compared to isoform a. Sequence Note: This RefSeq record was created from transcript and genomic sequence data to make the sequence consistent with the reference genome assembly. The genomic coordinates used for the transcript record were based on transcript alignments.