

Product datasheet for **SC335225**

WDR61 (NM_001303247) Human Untagged Clone

Product data:

Product Type: Expression Plasmids
Product Name: WDR61 (NM_001303247) Human Untagged Clone
Tag: Tag Free
Symbol: WDR61
Synonyms: REC14; SKI8
Vector: pCMV6-Entry (PS100001)
Fully Sequenced ORF: >SC335225 representing NM_001303247.
Blue=Insert sequence Red=Cloning site Green=Tag(s)

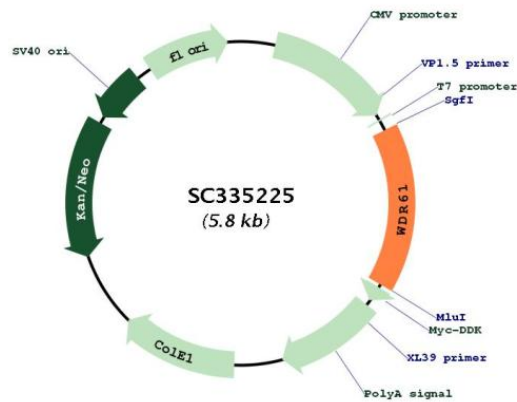
```
ATGACCAACCAAGTACGGTATTCTCTTCAAACAAGAGCAAGCCATGATGATGCCATTTGGTCAGTTGCT
TGGGGGACAAACAAGAAGGAAAACCTCTGAGACAGTGGTCACAGGCTCCCTAGATGACCTGGTGAAGGTC
TGGAAATGGCGTGATGAGAGGCTGGACCTACAGTGGAGTCTGGAGGGACATCAGCTGGGAGTGGTGTCT
GTGGACATCAGCCACACCCTGCCATTGCTGCATCCAGCTCTCTTGATGCTCATATTCGTCTTTGGGAC
TTGGAAAATGGCAAACAGATAAAGTCCATAGATGCAGGACCTGTGGATGCCTGGACTTTGGCCTTTTCT
CCTGATCCCAGTATCTGGCCACAGGAACCTCATGTCGGGAAAGTGAACATTTTTGGTGTGAAAGTGGG
AAAAGGAATATTCTTTGGACACGAGAGGAAAATTCATTCTTAGTATTGCATATAGTCCTGATGGGAAA
TACCTAGCCAGTGGAGCCATAGATGGAATCATCAATTTTTGATATTGCAACTGAAAACCTTCTGCAT
ACCCTGGAAGGCCATGCCATGCCATTGCTCCTTGACCTTTTCCCGGACTCCCAGCTCCTTGTCACT
GCTTCAGATGATGGCTACATCAAGATCTATGATGTACAACATGCCAATTTGGCTGGCAGCGTGAGCGGC
CATGCCTCCTGGGTGCTGAACGTTGCATTCTGTCTGATGACACTCACTTTGTTCCAGTTCGTCTGAC
AAAAGTGTAAAAGTTTGGGATGTTGGAACGAGGACTTGTGTTCACACCTCTTTGATCACCAGGATCAG
GTCTGGGGAGTAAAATACAATGGAATGGTTCAAAAATTGTGTCTGTTGGAGATGACCAGGAAATTCAC
ATCTATGATTGTCCAATTAA
```

Restriction Sites: SgfI-MluI



[View online »](#)

Plasmid Map:



ACCN: NM_001303247

Insert Size: 918 bp

OTI Disclaimer: Our molecular clone sequence data has been matched to the reference identifier above as a point of reference. Note that the complete sequence of our molecular clones may differ from the sequence published for this corresponding reference, e.g., by representing an alternative RNA splicing form or single nucleotide polymorphism (SNP).

Components: The ORF clone is ion-exchange column purified and shipped in a 2D barcoded Matrix tube containing 10ug of transfection-ready, dried plasmid DNA (reconstitute with 100 ul of water).

Reconstitution Method:

1. Centrifuge at 5,000xg for 5min.
2. Carefully open the tube and add 100ul of sterile water to dissolve the DNA.
3. Close the tube and incubate for 10 minutes at room temperature.
4. Briefly vortex the tube and then do a quick spin (less than 5000xg) to concentrate the liquid at the bottom.
5. Store the suspended plasmid at -20°C. The DNA is stable for at least one year from date of shipping when stored at -20°C.

RefSeq:	<u>NM_001303247.1</u>
RefSeq Size:	1439 bp
RefSeq ORF:	918 bp
Locus ID:	80349
UniProt ID:	<u>Q9GZS3</u>
Cytogenetics:	15q25.1
Protein Pathways:	RNA degradation
MW:	33.6 kDa
Gene Summary:	<p>WDR61 is a subunit of the human PAF and SKI complexes, which function in transcriptional regulation and are involved in events downstream of RNA synthesis, such as RNA surveillance (Zhu et al., 2005 [PubMed 16024656]).[supplied by OMIM, Mar 2008]</p> <p>Transcript Variant: This variant (1) represents the longest transcript and encodes the longer isoform (a). Variants 1 and 2 both encode isoform a.</p>