

Product datasheet for **SC335183**

WNT2B (NM_001291880) Human Untagged Clone

Product data:

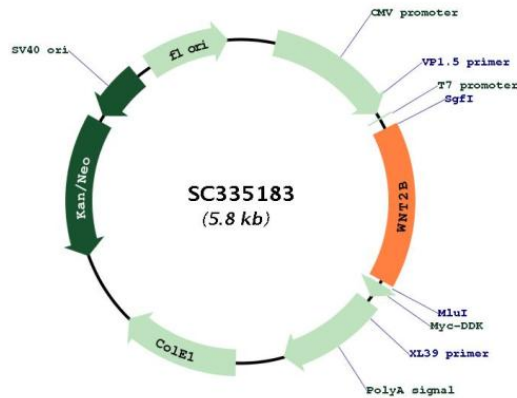
Product Type:	Expression Plasmids
Product Name:	WNT2B (NM_001291880) Human Untagged Clone
Tag:	Tag Free
Symbol:	WNT2B
Synonyms:	WNT13
Mammalian Cell Selection:	Neomycin
Vector:	pCMV6-Entry (PS100001)
E. coli Selection:	Kanamycin (25 ug/mL)
Fully Sequenced ORF:	>SC335183 representing NM_001291880. Blue=Insert sequence Red=Cloning site Green=Tag(s)

```
GCTCGTTT TAGTGAACCGTCAGAATTTTGT AATACGACTCACTATAGGGCGCCGGGAATTCGTCGACTG
GATCCGGTACCGAGGAGATCTGCCGCC CGCATCGCC
ATGCGTTCAGTGGGCGAGGGTGCCCGAGAATGGATCCGAGAGTGT CAGCACCAATTCCGCCACCACCGC
TGGAACTGTACCACCCTGGACCGGGACCACACCGTCTTTGGCCGTGTCATGCTCAGAAGTAGCCGAGAG
GCAGCTTTTGTATATGCCATCTCATCAGCAGGGGTAGTCCACGCTATTACTCGCGCTGTAGCCAGGGT
GAACTGAGTGTGTGCAGCTGTGACCCCTACACCCGTGGCCGACACCATGACCAGCGTGGGACTTTGAC
TGGGGTGGCTGCAGTGACAACATCCACTACGGTGTCCGTTTTGCCAAGGCCTTCGTGGATGCCAAGGAG
AAGAGGCTTAAGGATGCCCGGGCCCTCATGAACCTACATAATAACCGCTGTGGTGCACGGCTGTGCCG
CGGTTTCTGAAGCTGGAGTGTAAAGTGCCATGGCGTGAGTGGTTCCTGTACTCTGCCACCTGCTGGCGT
GCACTCTCAGATTTCCGCCGCACAGGTGATTACCTGCGGCGACGCTATGATGGGGCTGTGCAGGTGATG
GCCACCCAAGATGGTGCCAATTCACCGCAGCCCGCAAGGCTATCGCCGTGCCACCCGGACTGATCTT
GTCTACTTTGACAACTCTCCAGATTACTGTGTCTTGGACAAGGCTGCAGGTTCCCTAGGCACTGCAGGC
CGTGTCTGCAGCAAGACATCAAAGGAACAGACGGTTGTGAAATCATGTGCTGTGGCCGAGGGTACGAC
ACAACCTCGAGTCACCCGTGTTACCCAGTGTGAGTGCAAATCCACTGGTGTGCTGTACGGTGAAG
GAATGCAGAAACTGTGGACGTCCATACTTGCAAAGCCCCCAAGAAGGCAGAGTGGCTGGACCAAAAC
TGA
ACGCGTACGCGGGCCGCTCGAGCAGAAACTCATCTCAGAAGAGGATCTGGCAGCAAATGATATCCTGGAT
TACAAGGATGACGACGATAAGGTTTAAACGGCCGGC
```

Restriction Sites: SgfI-MluI



[View online »](#)

Plasmid Map:


ACCN: NM_001291880

Insert Size: 900 bp

OTI Disclaimer: Our molecular clone sequence data has been matched to the reference identifier above as a point of reference. Note that the complete sequence of our molecular clones may differ from the sequence published for this corresponding reference, e.g., by representing an alternative RNA splicing form or single nucleotide polymorphism (SNP).

Components: The ORF clone is ion-exchange column purified and shipped in a 2D barcoded Matrix tube containing 10ug of transfection-ready, dried plasmid DNA (reconstitute with 100 ul of water).

Reconstitution Method:

1. Centrifuge at 5,000xg for 5min.
2. Carefully open the tube and add 100ul of sterile water to dissolve the DNA.
3. Close the tube and incubate for 10 minutes at room temperature.
4. Briefly vortex the tube and then do a quick spin (less than 5000xg) to concentrate the liquid at the bottom.
5. Store the suspended plasmid at -20°C. The DNA is stable for at least one year from date of shipping when stored at -20°C.

RefSeq: [NM_001291880.1](#)

RefSeq Size: 2854 bp

RefSeq ORF: 900 bp

Locus ID: 7482

UniProt ID: [Q93097](#)

Cytogenetics: 1p13.2

Protein Families:	Secreted Protein
Protein Pathways:	Basal cell carcinoma, Hedgehog signaling pathway, Melanogenesis, Pathways in cancer, Wnt signaling pathway
MW:	33.9 kDa
Gene Summary:	<p>This gene encodes a member of the wiggless-type MMTV integration site (WNT) family of highly conserved, secreted signaling factors. WNT family members function in a variety of developmental processes including regulation of cell growth and differentiation and are characterized by a WNT-core domain. This gene may play a role in human development as well as carcinogenesis. Alternative splicing results in multiple transcript variants. [provided by RefSeq, May 2014]</p> <p>Transcript Variant: This variant (3) differs in the 5' UTR and uses a downstream start codon, compared to variant WNT-2B2. The encoded isoform (3) has a shorter N-terminus, compared to isoform WNT-2B2.</p>