

Product datasheet for **SC335181**

RHBDL1 (NM_001278721) Human Untagged Clone

Product data:

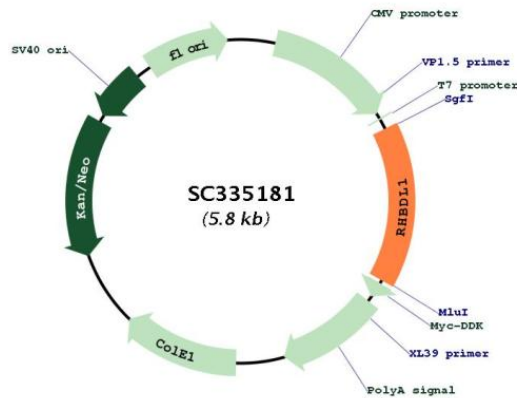
Product Type:	Expression Plasmids
Product Name:	RHBDL1 (NM_001278721) Human Untagged Clone
Tag:	Tag Free
Symbol:	RHBDL1
Synonyms:	RHBDL; RRP
Mammalian Cell Selection:	Neomycin
Vector:	pCMV6-Entry (PS100001)
E. coli Selection:	Kanamycin (25 ug/mL)
Fully Sequenced ORF:	>SC335181 representing NM_001278721. Blue=Insert sequence Red=Cloning site Green=Tag(s)

```
GCTCGTTTGTAGTGAACCGTCAGAATTTTGTAAATACGACTCACTATAGGGCGCCGGGAATTCGTCGACTG
GATCCGGTACCGAGGAGATCTGCCGCCCGCATCGCC
ATGGACAGGAGCTCGCTGCTGCAGCTCATCCAGGAGCAGCAGCTGGACCCGAGAACACAGGCTTCATC
GGTGGGACACCTTCACTGGCCTGGTGCACAGCCATGAGCTGCCCTGGACCCGGCCAAGCTGGACATG
CTGGTGGCCCTGGCTCAGAGCAACGAGCAGGGCCAGGTCTGCTACCAGGAGCTGGTGGACCTGATCATC
GTGTTCTGTGTTACGGGGCCCGCCTCAACAAGTGGGTGCTGCAGACCTACCACCCGAGTACATGAAG
AGCCCCCTTGTGTACCACCCGGGCACCGTGCCCGCCCTGGCGCTTCTCACCTACATGTTTCATGCAC
GTTGGGCTGGAGCAGCTGGGTTCAACGCCCTCCTGCAGCTGATGATCGGGGTGCCCTGGAGATGGTG
CACGGCTGCTCCGCATCAGCCTGCTCTACCTGGCAGGCGTGCTGGCAGGCTCCCTAACCGTCTCCATC
ACCGACATGCGGGCCCGGTGGTGGGAGGCTCCGGCGGGTCTACGCCCTGTGCTCGGCACACCTGGCC
AACGTTGTGATGAAGTGGGCTGGGATGAGATGTCCCTACAAGTTGCTGAGGATGGTGTGGCCTGGTG
TGCATGAGCTCCGAGGTGGGCGGGCCGTGTGGCTGCGCTTCTCCCCGCCGCTGCCCGCCTGGGCCCA
CAGCCCAGCTTCATGGCGCACCTGGCAGGCGGGTGGTGGGGGTGAGCATGGGCTGACCATCCTGCGG
AGCTACGAGGAGCGCCTGCGGGACAGTGCGGCTGGTGGTGGTGTGCTGCTGGCCTACGGCACCTTCTGT
CTCTTCGCGCTCTTCTGGAACGTCTTCGCTACGACCTGCTGGGCGCCACATCCCCCACCGCCCTGA
ACGCGTACGCGGCCGCTCGAGCAGAACTCATCTCAGAAGAGGATCTGGCAGCAAATGATATCCTGGAT
TACAAGGATGACGACGATAAGGTTTAAACGGCCGGC
```

Restriction Sites: SgfI-MluI



[View online »](#)

Plasmid Map:


ACCN: NM_001278721

Insert Size: 897 bp

OTI Disclaimer: Our molecular clone sequence data has been matched to the reference identifier above as a point of reference. Note that the complete sequence of our molecular clones may differ from the sequence published for this corresponding reference, e.g., by representing an alternative RNA splicing form or single nucleotide polymorphism (SNP).

Components: The ORF clone is ion-exchange column purified and shipped in a 2D barcoded Matrix tube containing 10ug of transfection-ready, dried plasmid DNA (reconstitute with 100 ul of water).

Reconstitution Method:

1. Centrifuge at 5,000xg for 5min.
2. Carefully open the tube and add 100ul of sterile water to dissolve the DNA.
3. Close the tube and incubate for 10 minutes at room temperature.
4. Briefly vortex the tube and then do a quick spin (less than 5000xg) to concentrate the liquid at the bottom.
5. Store the suspended plasmid at -20°C. The DNA is stable for at least one year from date of shipping when stored at -20°C.

RefSeq: [NM_001278721.1](#)

RefSeq Size: 1255 bp

RefSeq ORF: 897 bp

Locus ID: 9028

UniProt ID: [O75783](#)

Cytogenetics: 16p13.3

Protein Families: Protease, Transmembrane

MW: 33.1 kDa

Gene Summary: This gene encodes a protein similar to Rhomboid in *Drosophila* which is involved in signalling in the Spitz/epidermal growth factor receptor/mitogen-activated protein kinase pathway. The Rhomboid family of proteins consists of intramembrane serine proteases containing several transmembrane domains. Alternative splicing results in multiple transcript variants encoding different isoforms. [provided by RefSeq, Jul 2013]
Transcript Variant: This variant (2) differs in the 5' UTR and 5' coding region, uses an alternate start codon and lacks an in-frame exon in the 5' coding region, compared to variant 3. It encodes isoform 2, which is shorter and has a distinct N-terminus, compared to isoform 3.