

Product datasheet for **SC332253**

TBC1D1 (NM_001253912) Human Untagged Clone

Product data:

Product Type: Expression Plasmids
Product Name: TBC1D1 (NM_001253912) Human Untagged Clone
Tag: Tag Free
Symbol: TBC1D1
Synonyms: TBC; TBC1
Vector: pCMV6-Entry (PS100001)
Fully Sequenced ORF: >SC332253 representing NM_001253912.
Blue=Insert sequence Red=Cloning site Green=Tag(s)

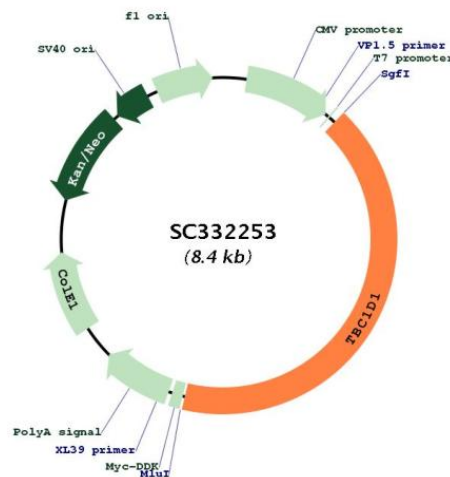
```
ATGGAACCAATAACATTCACAGCAAGGAAACATCTGCTTTCTAACGAGGTCTCGGTGGATTTTGGCCTG
CAGCTGGTGGGCTCCCTGCCTGTGCATTCCCTGACCACCATGCCATGCTGCCCTGGGTTGTGGCTGAG
GTGCGAAGACTCAGCAGGCAGTCCACCAGAAAGGAACCTGTAACCAAGCAAGTCCGGCTTTGCGTTTCA
CCCTCTGGACTGAGATGTGAACCTGAGCCAGGGAGAAGTCAACAGTGGGATCCCCTGATCTATTCCAGC
ATCTTTGAGTGAAGCCTCAGCGTGTTCACAACTGATTCACAACAGTCATGACCCAAGTACTTTGCT
TGCTGATTAAGGAAGACGCTGTCCACCGCAGAGTATCTGCTATGTGTTCAAAGCCGATGATCAAACA
AAAGTGCCTGAGATCATCAGCTCCATCCGTGAGCGGGGAAGATCGCCCGCAGGAGGAGCTGCACTGC
CCGTCCGAGTTCCAGCAGACGTTTTTCCAAGAAGTTCGAGGTGCTCTTCTGCGGCCGCGTGACGGTGGCG
CACAAGAAGGCTCCGCCGGCCCTGATCGAGAGTGCATCGAGAAGTTCAATCACGTGAGCGGCAGCCGG
GGGTCCGAGAGCCCCCGCCCAACCCGCCCATGCCCGCGCCACAGGGAGCCAGGAGCCTGTGCGCAGG
CCCATGCGCAAGTCTTCTCCAGCCCGGCTGCGCTCGCTGGCCTTTAGGAAGGAGCTGCAAGGATGGG
GGCCTCCGAAGCAGCGGCTTCTCAGCTCCTTCGAGGAGAGCGACATTGAGAACCACCTCATTAGCGGA
CACAATATTGTGACGCCACAGATATCGAGGAAAATCGAACTATGCTCTTCACGATTGGCCAGTCTGAA
GTTTACCTCATCAGTCTGACACCAAAAAATAGCATTGGAGAAAAATTTAAGGAGATATCCTTTTGC
TCTCAGGGCATCAGACAGTGGACCACTTTGGGTTTATCTGTGCGGAGTCTTCCGGAGGTGGCGGCTTT
CATTTTGTCTGTTACGTGTTTTCAGTGCACAAATGAGGCTCTGGTTGATGAAATTATGATGACCCTGAAA
CAGGCCTTACGGTGGCCGAGTGCAGCAGACAGCTAAGGCGCCAGCCAGCTGTGTGAGGGCTGCCCC
CTGCAAAGCCTGCACAAGCTCTGTGAGAGGATAGAGGGAATGAATTCTTCCAAAACAAAAGTGAAGTGA
CAAAAGCACCTGACGACATTAACCAATCAGGAGCAGGCGACTATTTTTGAAGAGGTTTCAAAATGAGA
CCGAGAAATGAGCAGCGAGAGAATGAATTGATTATTTCTTTTCTGAGATGTTTATGAAGAGAAACAG
AAAGAACACATCCATATTGGGGAGATGAAGCAGACATCGCAGATGGCAGCAGAGAATATTGGAAGTGA
TTACCACCCAGTCCACTCGATTTAGGCTAGATATGCTGAAAAACAAAGCAAAGAGATCTTTAACAGAG
TCTTTAGAAAGTATTTTGTCCCGGGTAATAAAGCCAGAGGCCTGCAGGAACACTCCATCAGTGTGGAT
CTGGATAGCTCCCTGTCTAGTACATTAAGTAAACCCAGCAAAGAGCCATCTGTGTGTGAAAAGGAGGCC
TTGCCATCTCTGAGAGCTCCTTTAAGCTCCTCGGCTCCTCGGAGGACCTGTCCAGTGACTCGGAGAGT
CATCTCCAGAAGAGCCAGCTCCGCTGTGCCCCAGCAGGCTTCAGGAGGCGAGCAAACACCTGAGT
CACTTCCCATCGAATGCCAGGAACCTCCACAACCTGCCCGGGGTCCCCGGGGTTCGCAAAGGAAA
CTTATGAGGTATCACTCAGTGAGCAGAGACGCTCATGAACGAAATGTGGATCCTTCACTGTGGT
```



```
GAGTCTAAGCACCGCCAGGTCAGTCTTCAGCTCCTGCTCCTCCACCTCGTCTTAACCCCTCCGCTCC
TCGCCAACTTTTTAAGTACCTAAAACATAATCCAGTGGAACAAGTGGGAATGCTGTGCCAAAG
AGCATCTCCTACCGTAATGCCCTGCGGAAAAAAGTTCATTCTTCTCCTGTGCCAAATTTCTAAAA
TTTCTGGCTCCTGTAGATGAAAATAACACCTCTGATTTTATGAACACAAAAAGGGACTTTGAATCCAAA
GCAAACCATCTTGGTGATTCTGGTGGGACTCCTGTGAAGACCCGGAGGCATTCTGGAGGCAGCAGATA
TTCTCCGAGTAGCCACCCCGCAGAAGGCGTGCGATTCTCCAGCAGATATGAAGATTATCAGAGCTG
GGAGAGCTTCCCCACGATCTCCTTTAGAACCAGTTTGTGAAGATGGGCCCTTTGGCCCCCACCAGAG
GAAAAGAAAAGGACATCTCGTGAGCTCCGAGAGCTGTGGCAAAAAGGCTATTCTTCAACAGATACTGCTG
CTTAGAATGGAGAAGGAAAATCAGAAGCTCCAAGCCTCTGAAAATGATTTGCTGAACAAGCGCCTGAAG
CTCGATTATGAAGAAATTAAGTCTGCTTAAAGAAGTAACTACAGTGTGGGAAAAGATGCTTAGCACT
CCAGGAAGATCAAAAATTAAGTTTGACATGGAAAAATGCACTCGGCTGTTGGGCAAGGTGTGCCACGT
CATCACCGAGGTGAAATCTGAAATTTCTAGCTGAGCAATCCACCTTAAACACCAAGTTTCCAGCAAA
CAGCAGCCAAAGGATGTCCATACAAAGAACTCTTAAAGCAGCTGACTTCCAGCAGCATGCGATTCTT
ATTGACCTTGGGCGAACCTTCTACACACCCATACTTCTGCCCAGCTTGGAGCAGGACAGCTATCG
CTTTACAACATTTGAAGGCCTACTCACTTCTAGACCAGGAAGTGGGATATTGCCAAGGTCTCAGCTTT
GTAGCAGGCATTTTGCTTCTCATATGAGTGAGGAAGAGGCGTTTAAAATGCTCAAGTTTCTGATGTTT
GACATGGGGCTGCGGAAACAGTATCGGCCAGACATGATTATTTTACAGATGGAAAAGACCATCAATCAG
GTATTTGAAATGGACATCGTAAACAGTTACAAGCTTATGAAGTTGAGTACCACGTCTTCAAGAAGAA
CTTATCGATTCTCTCCTCTCAGTGACAACAAAGAATGGATAAATTAGAGAAAACCAACAGCAGCTTA
CGCAAACAGAACCTTGACCTCCTGAACAGTTGCAGGTGGCAAATGGTAGGATCCAAAGCCTTGAGGCC
ACCATTGAGAAGCTCCTGAGCAGTGAGAGCAAGCTGAAGCAGGCCATGCTTACCTTAGAACTGGAGCGG
TCGGCCCTGCTGCAGACGGTGGAGGAGCTGCGCGCGGAGCGCAGAGCCAGCGACCCGGAGCCTGAG
TGCACGCAGCCCGAGCCACGGGCGACTGA
```

Restriction Sites:

Sgfl-Mlul

Plasmid Map:

ACCN:

NM_001253912

Insert Size:

3480 bp

OTI Disclaimer:

Our molecular clone sequence data has been matched to the reference identifier above as a point of reference. Note that the complete sequence of our molecular clones may differ from the sequence published for this corresponding reference, e.g., by representing an alternative RNA splicing form or single nucleotide polymorphism (SNP).

Components:	The ORF clone is ion-exchange column purified and shipped in a 2D barcoded Matrix tube containing 10ug of transfection-ready, dried plasmid DNA (reconstitute with 100 ul of water).
Reconstitution Method:	<ol style="list-style-type: none">1. Centrifuge at 5,000xg for 5min.2. Carefully open the tube and add 100ul of sterile water to dissolve the DNA.3. Close the tube and incubate for 10 minutes at room temperature.4. Briefly vortex the tube and then do a quick spin (less than 5000xg) to concentrate the liquid at the bottom.5. Store the suspended plasmid at -20°C. The DNA is stable for at least one year from date of shipping when stored at -20°C.
RefSeq:	<u>NM_001253912.1</u>
RefSeq Size:	5678 bp
RefSeq ORF:	3480 bp
Locus ID:	23216
UniProt ID:	<u>Q86TI0</u>
Cytogenetics:	4p14
Protein Families:	Druggable Genome
MW:	131.4 kDa
Gene Summary:	<p>TBC1D1 is the founding member of a family of proteins sharing a 180- to 200-amino acid TBC domain presumed to have a role in regulating cell growth and differentiation. These proteins share significant homology with TRE2 (USP6; MIM 604334), yeast Bub2, and CDC16 (MIM 603461) (White et al., 2000 [PubMed 10965142]).[supplied by OMIM, Mar 2008]</p> <p>Transcript Variant: This variant (2) has multiple differences in the coding region, but maintains the reading frame, compared to variant 1. The encoded isoform (2) is shorter than isoform 1.</p>