

## Product datasheet for **SC330194**

### PRPSAP2 (NM\_001243936) Human Untagged Clone

#### Product data:

Product Type:	Expression Plasmids
Product Name:	PRPSAP2 (NM_001243936) Human Untagged Clone
Tag:	Tag Free
Symbol:	PRPSAP2
Synonyms:	PAP41
Vector:	pCMV6-Entry (PS100001)
Fully Sequenced ORF:	>SC330194 representing NM_001243936. Blue=Insert sequence Red=Cloning site Green=Tag(s)

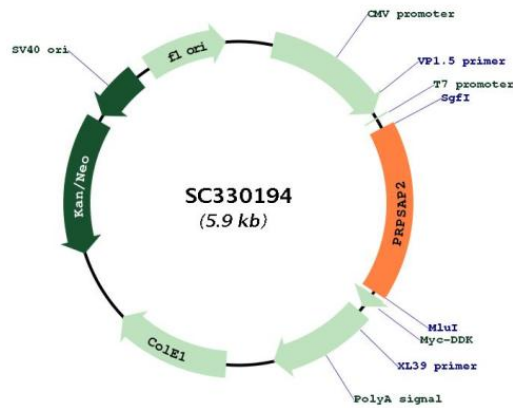
```
ATGTTTTGTGTGACGCCACCTGAATTAGAAACCAAGATGAACATAACCAAAGGTGGTCTGGTGTGTTT
TCAGCAAACCTCGAATTCATCATGTATGGAGCTATCAAAGAAAATTGCAGAGGACGTGAACACCACCATC
ATGGAGCTCCTGATCATGGTGTATGCATGTAAGACCTCTGTGCCAAGAGCATCATTGGCGTGATACCC
TACTTTCCTTACAGCAAGCAGTGAAGATGAGAAAAGAGGCTCCATTGTCTCTAAATTGCTGGCTTCC
ATGATGTGCAAAGCTGGTCTAACTCATCTTATTACTATGGATTTACACCAGAAGGAAATTCAGGGCTTC
TTCAATATTCCTGTTGACAATTTAAGAGCATCTCCCTTCTTATTACAGTATATTCAGAAGAGATCCCA
GATTACAGGAATGCAGTAATCGTGGCCAAGTCTCCAGCCTCGGCCAAGAGGGCACAGTCTTTTGCTGAG
CGCCTGCGCCTGGGAATTGCAGTGATTCATGGAGAGGCGCAGGATGCCGAGTCGGACTTGGTGGATGGA
CGGCATTTCCACCCATGGTCAGAAGTGTGGCTGCCATCCACCCAGCCTGGAGATCCCCATGCTGATT
CCTAAAGAAAAGCCCCAATCACGGTGTGGGTGATGTTGGAGGAAGGATTGCCATCATCGTGGATGAC
ATCATTGATGATGTTGACAGCTTCTTGCTGCAGCAGAGACCCTGAAGGAAAGAGGTGCATATAAGATC
TTTGTGATGGCAACTCATGGCTTGTGTCTTCTGACGCCCCCGGCGGATTGAAGAGTCTGCCATTGAT
GAGGTGGTGGTCACCAATACAATCCACATGAAGTCCAGAAGCTCCAGTGCCCAAGATTAACCTGTG
GATATCAGCATGATCCTTTCAGAGGCGATCCGTCCGATCCACAATGGGGAGTCCATGTCCTACCTTTTC
AGAAACATAGGCTTAGATGACTGA
```

Restriction Sites: Sgfl-Mlul



[View online »](#)

## Plasmid Map:



ACCN: NM\_001243936

Insert Size: 990 bp

OTI Disclaimer: Our molecular clone sequence data has been matched to the reference identifier above as a point of reference. Note that the complete sequence of our molecular clones may differ from the sequence published for this corresponding reference, e.g., by representing an alternative RNA splicing form or single nucleotide polymorphism (SNP).

Components: The ORF clone is ion-exchange column purified and shipped in a 2D barcoded Matrix tube containing 10ug of transfection-ready, dried plasmid DNA (reconstitute with 100 ul of water).

Reconstitution Method:

1. Centrifuge at 5,000xg for 5min.
2. Carefully open the tube and add 100ul of sterile water to dissolve the DNA.
3. Close the tube and incubate for 10 minutes at room temperature.
4. Briefly vortex the tube and then do a quick spin (less than 5000xg) to concentrate the liquid at the bottom.
5. Store the suspended plasmid at -20°C. The DNA is stable for at least one year from date of shipping when stored at -20°C.

RefSeq: [NM\\_001243936.1](https://www.ncbi.nlm.nih.gov/RefSeq/ accession/taxonomy/NCBI/1/109312.1/109312.1?from=organism&from_taxid=9606)

RefSeq Size: 1838 bp

RefSeq ORF: 990 bp

Locus ID: 5636

UniProt ID: [O60256](#)

Cytogenetics: 17p11.2

Protein Families: Druggable Genome

MW: 36.3 kDa

**Gene Summary:** This gene encodes a protein that associates with the enzyme phosphoribosylpyrophosphate synthetase (PRS). PRS catalyzes the formation of phosphoribosylpyrophosphate which is a substrate for synthesis of purine and pyrimidine nucleotides, histidine, tryptophan and NAD. PRS exists as a complex with two catalytic subunits and two associated subunits. This gene encodes a non-catalytic associated subunit of PRS. Alternate splicing results in multiple transcript variants. [provided by RefSeq, Sep 2011]  
Transcript Variant: This variant (2) differs in the 5' UTR, lacks two in-frame exons in the coding region and initiates translation at a downstream start codon, compared to variant 1. The resulting isoform (2) has a shorter N-terminus compared to isoform 1.